



ALTEKMA
ROAD MARKING MACHINE

THERE IS SOMEONE
WHO GUIDES
YOU ON THE
ROAD

COMPANY



Altekma A.Ş. was established within the body of Altekma group in 2007 on a land of 20.000 square meters in Torbalı district of İzmir, in order to provide solutions to the sector due to the need for surface preparation and coating methods in Turkey.

In order to better serve the needs, our Marmara Regional Directorate in Istanbul Pendik, our Central Anatolia Regional Directorate in Ankara Ostim and our Aegean Regional Directorate in İzmir Food Bazaar were established.

Altekma A.S. manufactures and sells road marking machines, paint sprayers, paint shop installation, high pressure water jets and sandblasting boilers.

Important factors in raising the bar of success; It is to adopt the transformation of the society into concrete products and services that will benefit the broad masses of the society with research, development and innovation-oriented studies.

In line with this vision, We export our products and services to Europe, the Middle East, Africa and Turkic Republics outside the country and is getting stronger day by day in the regions.

Board Chairman
Hulusi DURMUŞ

The system can be accessed by remotely connecting to the PLC control unit in ALT series machines.

ALT SERIES

ALT TC 5-50 DOT'N LINE



The machine consists of 2 main equipment, upper and lower parts. While the upper part provides paint transfer with the hydraulic driven system, the lower part performs the thermoplastic laying paint application with the help of temperature-resistant pneumatic equipment.

It is a compact product that can be mounted on the tank outlet of the road marking machine. It can be disassembled with the transport vehicle if desired. Thanks to the control unit on the vehicle on which it is mounted, the desired type, thickness and size can be applied.

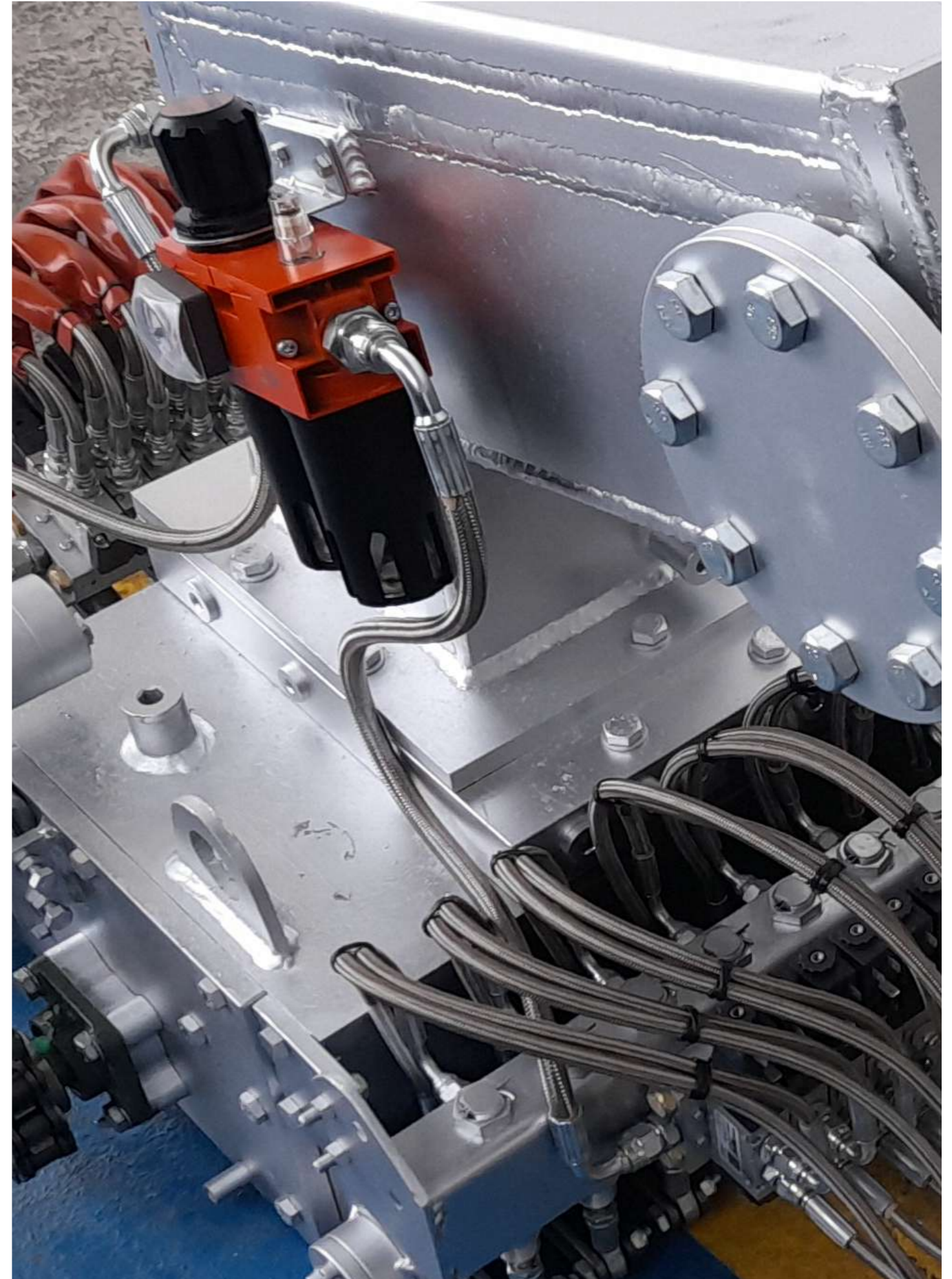
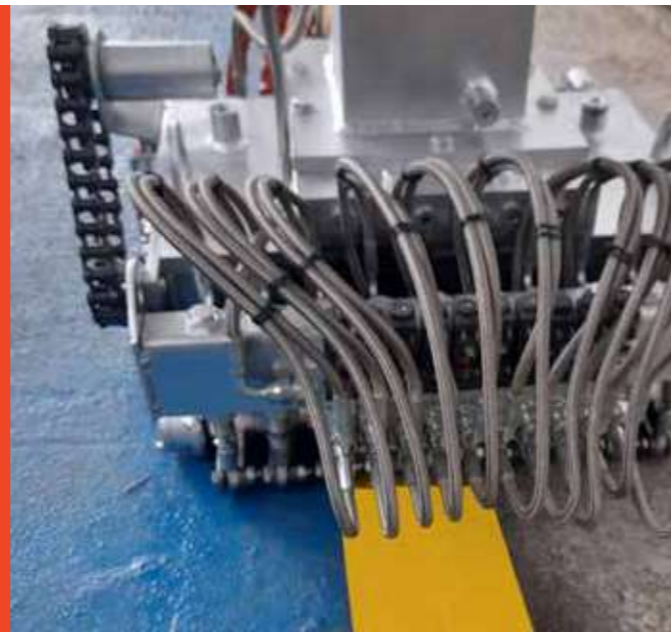


Thermoplastic laying paint can be applied from 5 cm to 50 cm. By changing the bottom part, only the apparatus for straight line application can be made and mounted on the machine, such as 12, 14, 20 cm, completely optional.

APPLICATION OPTIONS

- Flat lay paint application,
 - Extrude laying paint application,
 - Dot point spread paint application
- Each type of application method can be done separately or together.

* You can contact the authorized sales personnel to get information about the subject and to express your wishes.



ALT 25 AIRLESS

AIRLESS HAND PUSHED ROAD MARKING MACHINE

Thanks to paint gun and features, it is an ideal road marking machine for maintenance works, parking lots and playground, in-factory direction and forklift road lines.



Delivery Accessories:
15 m.hose, guide pointer, 1 unit paint gun

ALT 50 AIRLESS

AIRLESS AUTOMATIC ROAD MARKING MACHINE

ALT 50 is our self-propelled road marking machine designed for use in small and medium size line processes. It provides ease of application especially in urban areas and side streets while increasing line linearity to higher levels.



Delivery Accessories:
15 m.hose, guide pointer, 1 unit paint gun,
1 unit glass beads paint gun

TECHNICAL SPECIFICATIONS

Paint Tank Capacity	: 25 lt
Max.Working Pressure	: 230 bar
Max. Flow	: 2,8 lpm
Engine Power	: 5,5 hp
Weight	: 76 kg



TECHNICAL SPECIFICATIONS

Paint Tank Capacity	: 25 lt
Max.Working Pressure	: 230 bar
Max. Flow	: 2,8 lpm
Engine Power	: 5,5 hp
Weight	: 76 kg
Glass Beads Tank	: 12 l (optional)

ALT 100 AIRLESS

AIRLESS SELF PROPELLED ROAD MARKING MACHINE



PAINT PUMPS

- Hydraulic airless pump is used in the system
- Hydraulic paint pump flow rate 10 lt/min x 1 unit
- Max. Pressure 210 bar

ALT 100 is a self-propelled road marking machine model which is designed for application of urban lines. Through its ergonomic design, it is the solution partner of our small road marking works. Speeds up to max. 20 km/hour.

ENGINE

- Kubota 20 hp (15kw), water-cooled diesel engine.
- The machine has a hydrostatic drive.
- The air requirement of the system is 0.3 m³/min. It is provided with the compressor capacity.

CAPACITY

- Paint tank capacity 100 lt
- Glass beads tank capacity 30 lt
- Solvent tank capacity 3 lt
- Fuel tank capacity 15 lt

SLEDGES

- Right or left mounted gun carrying unit.

TECHNICAL SPECIFICATIONS

Length	: 2200 mm
Width	: 1550 mm
Height	: 2250 mm
Weight	: 665 kg
Speed	: Max.20 km/hour

GUNS

- 1 unit automatic airless paint gun
- 1 unit automatic glass beads gun
- 1 unit manual gun for handle application (Optional - with 15 m hose)

LINE CONTROL SYSTEM

- The line control unit is a touch screen and has 5 language options. (Turkish, English, French, Arabic and Russian) The control unit has a GPS module and can be remotely connected in case of any malfunctioning.

GUIDE POINTER

- Guide pointer is manual. Laser marking system is optional.

WARNING EQUIPMENTS

- Beacon lamp



ALT 100 AIRSPRAY

AIRSPRAY SELF PROPELLED ROAD MARKING MACHINE



It has CE certificate

TECHNICAL SPECIFICATIONS

Length	: 2200 mm
Width	: 1550 mm
Height	: 2250 mm
Weight	: 665 kg
Speed	: Max.20 km/hour

ALT 100 is a self-propelled airspray road marking machine model which is designed for application of urban lines. Through its an ergonomic design, it is the solution partner of our small road marking works. Speeds up to max. 20 km/hour.

ENGINE

- Kubota 20 hp (15kw), water-cooled diesel engine.
- The machine has a hydrostatic drive.
- The air requirement of the system is 0.3 m3/min. It is provided with the compressor capacity.

CAPACITY

- Paint tank capacity 100 lt
- Glass beads tank capacity 30 lt
- Solvent tank capacity 3 lt
- Fuel tank capacity 15 lt

SLEDGES

- Right or left mounted gun carrying unit.

GUNS

- 1 unit automatic airless paint gun
- 1 unit automatic glass beads gun
- 1 unit manual gun for handle application (Optional - with 15 m hose)

LINE CONTROL SYSTEM

- The line control unit is a touch screen and has 5 language options. (Turkish, English, French, Arabic and Russian) The control unit has a GPS module and can be remotely connected in case of any malfunctioning.

GUIDE POINTER

- Guide pointer is manual. Laser marking system is optional.

WARNING EQUIPMENTS

- Beacon lamp



ALT 180 AIRLESS

AIRLESS SELF PROPELLED ROAD MARKING MACHINE



ALT 180 is a self-propelled model designed for urban, intercity and airport road marking applications. Solvent-based and water-based road marking applications can be made easily by providing high atomization with the airless pump system. Speeds up to max.20 km/hour.

ENGINE

- Kubota 35 hp (26kw), water-cooled diesel engine.
- The machine has a hydrostatic drive.
- The air requirement of the system is 0.3 m³/min. It is provided with the compressor capacity.

CAPACITY

- Paint tank capacity 180 lt
- Glass beads tank capacity 100 lt
- Solvent tank capacity 30 lt
- Fuel tank capacity 30 lt

PAINT PUMPS

- Hydraulic airless pump is used in the system
- Hydraulic paint pump flow rate 20 lt/min x 1 unit
- Max. Pressure 230 bar

HYDRAULIC SLEDGE

- Right and left slidable sledge

GUNS

- 2 unit automatic airless paint gun (3rd gun optional)
- 2 units automatic glass beads gun (3rd gun optional)
- 1 unit manual gun for handle application (with 15 m hose)

LINE CONTROL SYSTEM

- The line control unit is a touch screen and has 5 language options. (Turkish, English, French, Arabic and Russian)
Records to memory all kinds of line forms in highway norms. The control unit has a GPS module and can be remotely connected in case of any malfunctioning.

GUIDE POINTER

- Guide pointer is manual. Laser marking system is optional.

WARNING EQUIPMENTS

- LED sinyalization

TECHNICAL SPECIFICATIONS

Length	: 3500 mm
Width	: 2000 mm
Height	: 2200 mm
Weight	: 1700 kg
Speed	: Max.20 km/hour



ALT 300 AIRLESS

AIRLESS SELF PROPELLED ROAD MARKING MACHINE

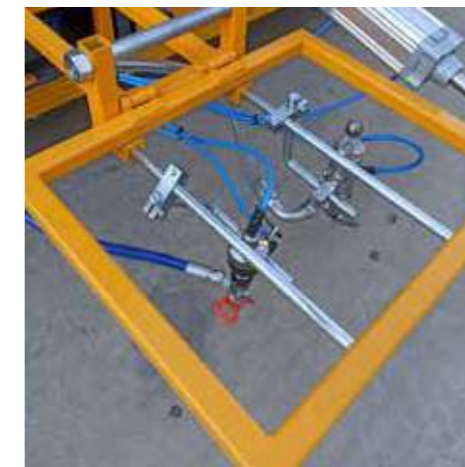
ALT 300 is a road marking machine which has been exclusively designed and developed for urban and intercity road road marking applications. The ALT 300, which can reach a maximum speed of 20 km per hour, has high maneuverability. Solvent-based and water-based road marking applications can be made easily by providing high atomization with the airless pump system.

ENGINE

- Kubota 35 hp (26kw), water-cooled diesel engine.
- The machine has a hydrostatic drive.
- The air requirement of the system is 0.3 m³/min. It is provided with the compressor capacity.

CAPACITY

- Paint tank capacity 300 lt
- Glass beads tank capacity 100 lt
- Fuel tank capacity 40 lt



PAINT PUMPS

- Hydraulic airless pump is used in the system
- Hydraulic paint pump flow rate 20 lt/min x 1 unit
- Max. Pressure 230 bar

HYDRAULIC SLEDGE

- Foldaway hydraulic sledge. (front sledge is optional.)

WARNING EQUIPMENTS

- LED sinalization

TECHNICAL SPECIFICATIONS

Length	: 4100 mm
Width	: 2350 mm
Height	: 2000 mm
Weight	: 1920 kg
Speed	: Max.20 km/hour

GUNS

- 2 unit automatic airless paint gun (3rd gun optional)
- 2 units automatic glass beads gun (3 rd gun optional)
- 1 unit manual gun for handle application (with 15 m hose)

LINE CONTROL SYSTEM

- The line control unit is a touch screen and has 5 language options. (Turkish, English, French, Arabic and Russian)
Records to memory all kinds of line forms in highway norms. The control unit has a GPS module and can be remotely connected in case of any malfunctioning.

GUIDE POINTER

- Guide pointer is manual. Laser marking system is optional.

ALT 500 98:2 1:1

AIRLESS SELF PROPELLED ROAD MARKING MACHINE

It is a machine specially designed and developed for long-distances intercity lines. Thanks to stainless steel high capacity tanks and paint pipelines, this machine is ideal for water-based road marking applications. Additionally it has airless paint pumps which enable to perform the application of two-component liquid-liquid (1:1 dosing) and liquid-solid road marking paints which are more durable than thermoplastic paints.

ENGINE

- Kubota 44 hp (33kw), water-cooled diesel engine.
- The machine has a hydrostatic drive.
- The air requirement of the system is 0.3 m³/min. It is provided with the compressor capacity.

PAINT PUMPS

- Hydraulic airless pump is used in the system
- Hydraulic paint pump total flow rate 40 l/min x 1 unit
- Max. Pressure 230 bar

SLEDGE

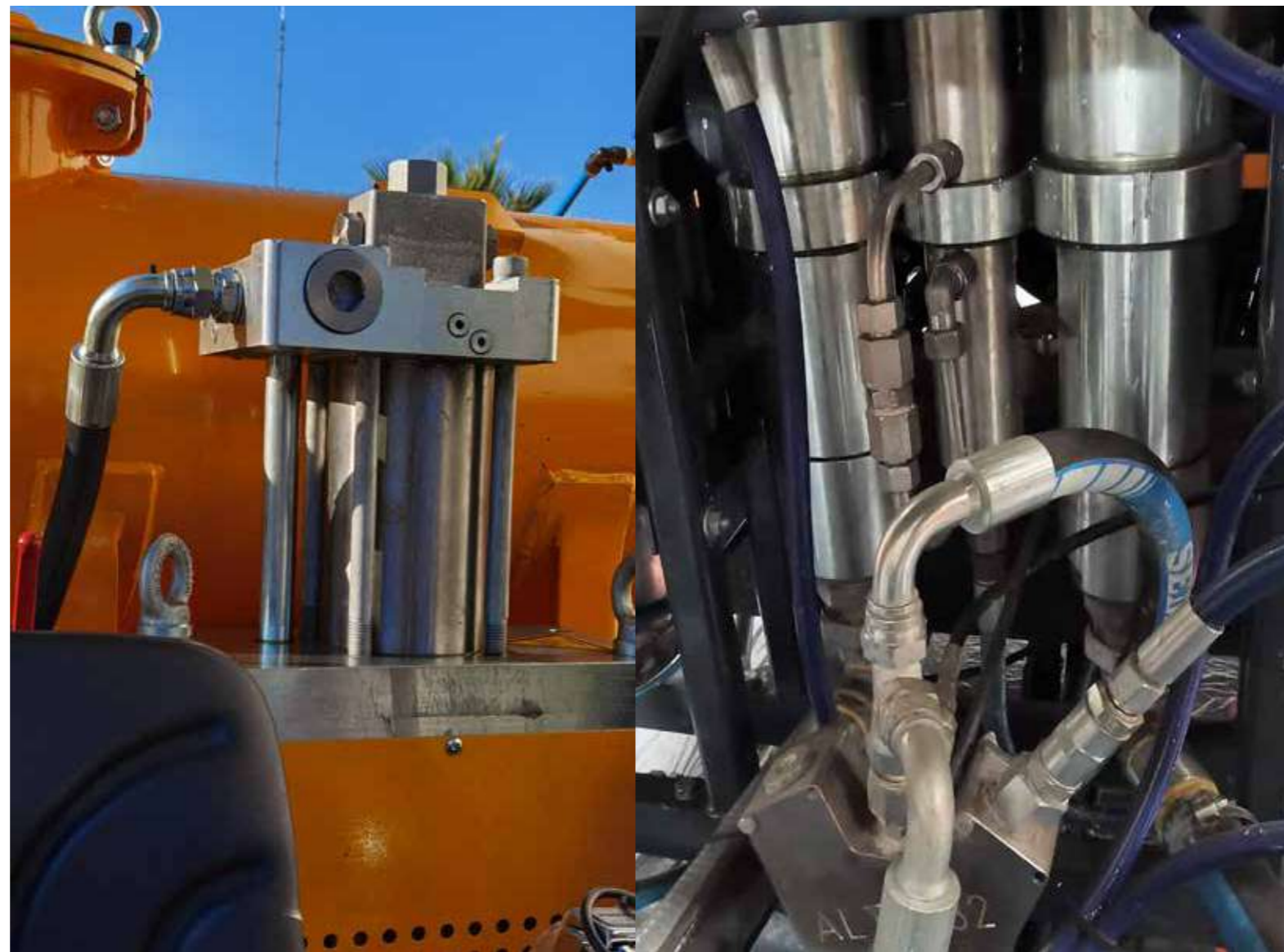
- Foldaway hydraulic sledge system

GUNS

- 3 units automatic airless paint gun
- 2 units automatic glass beads gun
- 1 unit manual gun for handle application (with 15 m hose)

LINE CONTROL SYSTEM

- The line control unit is a touch screen and has 5 language options. (Turkish, English, French, Arabic and Russian)
Records to memory all kinds of line forms in highway norms.
The control unit has a GPS module and can be remotely connected in case of any malfunctioning.



GUIDE POINTER

- Guide pointer is manual. Laser marking system is optional.

WARNING EQUIPMENTS

- LED sinyalization
- 2 units beacon lamp

CAPACITY

- Paint tank capacity 500 l (250 l x 2)
- Glass beads tank capacity 160 l
- Solvent tank capacity 30 l
- Hardener tank capacity 30 l
- Diesel tank capacity 60 l

TECHNICAL SPECIFICATIONS

Length	: 4300 mm
Width	: 2350 mm
Height	: 2400 mm
Weight	: 2200 kg
Speed	: Max.20 km/hour



ALT 1000 AIRLESS

AIRLESS SELF PROPELLED ROAD MARKING MACHINE



TECHNICAL SPECIFICATIONS

Length	: 5650 mm
Width	: 2000 mm
Height	: 2500 mm
Weight	: 4183 kg
Speed	: Max.20 km/hour

ALT 1000 is a self-propelled model designed for urban, intercity and airport marking applications. The ALT 1000, which can reach a maximum speed of 20 km per hour, is ideal for large-scale applications thanks to its high maneuverability, big paint and glass bead tank capacity.

By providing high atomization with the airless pump system, clear lines are obtained. Water-based, solvent-based, two component spray liquid-liquid and liquid-solid paint applications are made with this machine.

ENGINE

- "Kubota 84 hp (63kw), water-cooled diesel engine.
- The machine has a hydrostatic drive.
- The air requirement of the system is 1.8 m³/min. It is provided with the compressor capacity."

CAPACITY

- Paint tank capacity 1000 l (500 l x 2 units)
- Glass beads tank capacity 200 l
- Solvent tank capacity 30 l
- Diesel tank capacity 150 l

PAINT PUMPS

- Hydraulic airless pump is used in the system
- Hydraulic paint pump flow rate 26 l/min x 2 units
- Max. Pressure 230 bar"

MANUAL SLEDGE

- Right and left sliding up-down manuel sledge

GUNS

- 5 units automatic airless paint gun
- 5 units automatic glass beads gun
- 1 unit manual gun for handle application (with 15 m hose)

LINE CONTROL SYSTEM

- The line control unit is a touch screen and has 5 language options. (Turkish, English, French, Arabic and Russian)
Records to memory all kinds of line forms in highway norms. The control unit has a GPS module and can be remotely connected in case of any malfunctioning.

GUIDE POINTER

- Guide pointer is manual. Laser marking system is optional.

WARNING EQUIPMENTS

- 2 units beacon lamp



ALT 1500 AIRLESS

AIRLESS SELF PROPELLED ROAD MARKING MACHINE

ALT 1500 is a self-propelled model designed for urban, intercity and airport marking applications. The ALT 1500, which can reach a maximum speed of 20 km per hour, is ideal for large-scale applications thanks to its high maneuverability, big paint and glass bead tank capacity.

By providing high atomization with the airless pump system, clear lines are obtained. Water-based, solvent-based, two component spray liquid-liquid and liquid-solid paint applications are made with this machine.

ENGINE

- Kubota 84 hp (63kw), water-cooled diesel engine.
- The machine has a hydrostatic drive.
- The air requirement of the system is 1.8 m³/min. It is provided with the compressor capacity."

CAPACITY

- "Paint tank capacity 1500 l (750 l x 2 units)
- Glass beads tank capacity 300 l
- Solvent tank capacity 30 l
- Diesel tank capacity 150 l

PAINT PUMPS

- Hydraulic airless pump is used in the system
- Hydraulic paint pump flow rate 26 l/min x 2 units
- Max. Pressure 230 bar"

GUIDE POINTER

- Guide pointer is manual. Laser marking system is optional.

WARNING EQUIPMENTS

- 2 units beacon lamp

MANUAL SLEDGE

- Right and left sliding up-down manuel sledge

GUNS

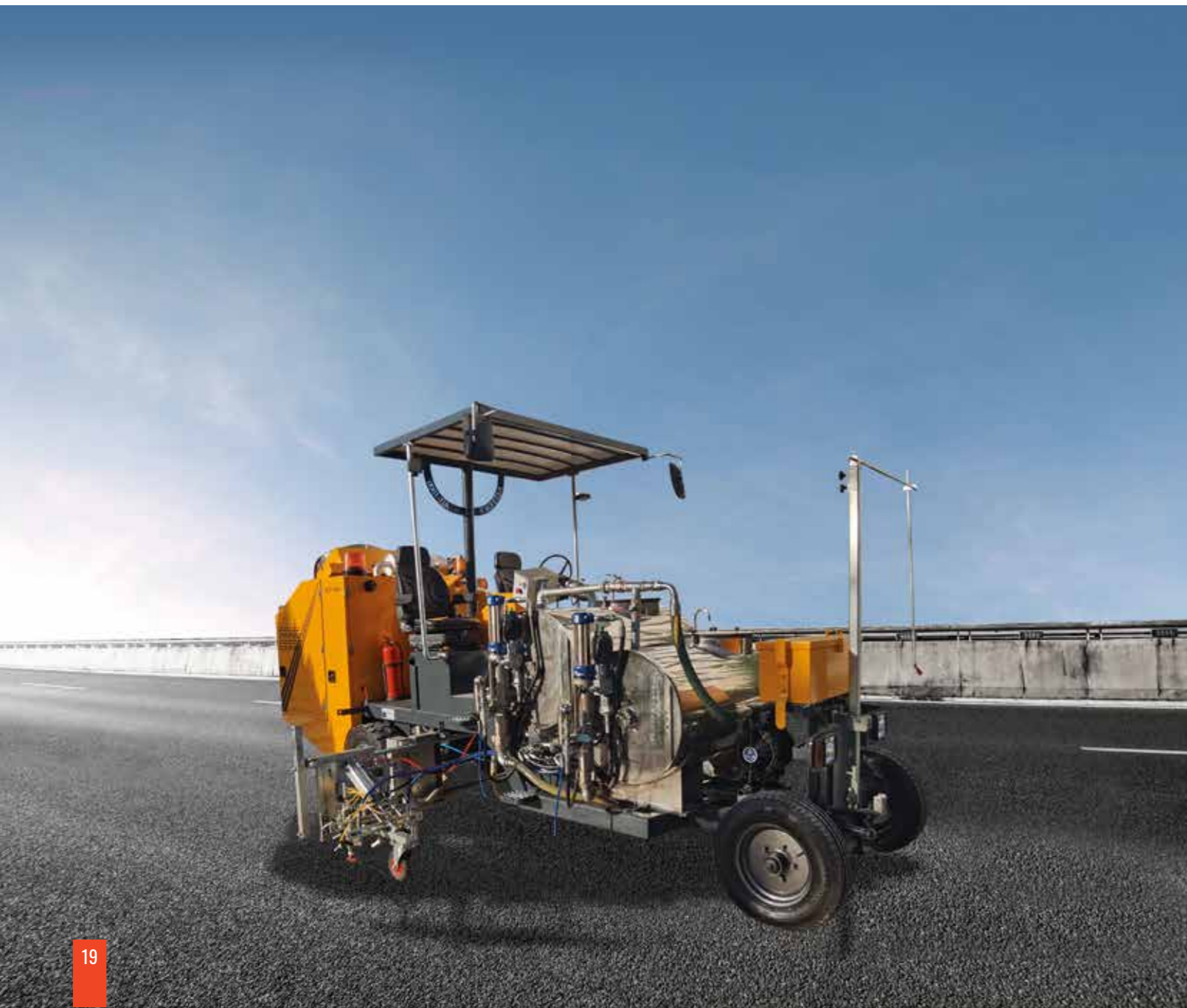
- 5 units automatic airless paint gun
- 5 units automatic glass beads gun
- 1 unit manual gun for handle application (with 15 m hose)

LINE CONTROL SYSTEM

- The line control unit is a touch screen and has 5 language options. (Turkish, English, French, Arabic and Russian)
Records to memory all kinds of line forms in highway norms. The control unit has a GPS module and can be remotely connected in case of any malfunctioning.

TECHNICAL SPECIFICATIONS

Length	: 6050 mm
Width	: 1950 mm
Height	: 2850 mm
Weight	: 4480 kg
Speed	: Max.20 km/hour



ALT 1600 AIRLESS

ROAD MARKING MOUNTED EQUIPMENT TRUCK



The mounted part may vary according to the carrier vehicle. For the design, please contact the authorized sales personnel.

It is a model specially designed and developed for long-distance intercity applications. Thanks to stainless steel high capacity tanks and paint pipelines, it is ideal for water-based road marking applications.

ENGINE

- Mounted engine min.20 hp diesel engine.
- All the needs of the mounted part are supplied from this engine.
- The air requirement of the system is 1.8 m³/min. It is provided with the compressor capacity.

CAPACITY

- Paint tank capacity 1200 l (600 l x 2 Units)
- Glass beads tank capacity 150 l
- Solvent tank capacity 50 l
- Diesel tank capacity 40 l

Additionally, ALT 1600 has airless paint pumps which enable to perform the application of two-component liquid-liquid (1:1 dosing) and liquid-solid road marking paints which are more durable than thermoplastic paints.

COMPRESSOR

- Compressors with high production capacity can be used in accordance with the project upon request.

PAINT PUMPS

- 2 hydraulic airless pumps are used in the system
- Hydraulic paint pump flow rate 20 l/min x 2 units
- Max. Pressure 230 bar

HYDRAULIC SLEDGE

- Right and left sliding up-down manuel sledge.

GUNS

- 3 units airless paint gun (2 guns on the left side, 1 gun on the right side)
- 3 units glass beads gun (2 guns on the left side, 1 gun on the right side)
- 1 unit manual gun for handle application (with 15 m hose)
- Line spacing and width can be adjusted by moving the guns up-down, left-right.

LINE CONTROL SYSTEM

- The line control unit is a touch screen and has 5 language options. (Turkish, English, French, Arabic and Russian) Records to memory all kinds of line forms in highway norms. The control unit has a GPS module and can be remotely connected in case of any malfunctioning.

GUIDE POINTER

- Guide pointer can be lowered and raised pneumatically and hydraulically.

WARNING EQUIPMENTS

- 2 units beacon lamp
LED signalization



ALT 4000 AIRLESS

ROAD MARKING MOUNTED EQUIPMENT TRUCK

It is a model specially designed and developed for long-distance intercity applications. Thanks to stainless steel high capacity tanks and paint pipelines, it is ideal for water-based road marking applications.

Additionally, ALT 4000 has airless paint pumps which enable to perform the application of two-component liquid-liquid (1:1 dosing) and liquid-solid road marking paints which are more durable than thermoplastic paints.



ENGINE

- Min.20 hp diesel engine is used. The engine powers all the hydraulic and electrical systems of the vehicle superstructure.

CAPACITY

- Paint tank capacity 2000 l x 2 units
- Glass beads tank capacity 500 l

SLEDGE

- Right and left sliding up-down manuel sledge.

GUNS

- 3 units airless paint gun (2 guns on the left side, 1 gun on the right side)
- 3 units glass beads gun (2 guns on the left side, 1 gun on the right side)
- 1 unit manual gun for handle application (with 15 m hose)
- Line spacing and width can be adjusted by moving the guns up-down, left-right.

LINE CONTROL SYSTEM

- The line control unit is a touch screen and has 5 language options. (Turkish, English, French, Arabic and Russian)
Records to memory all kinds of line forms in highway norms. The control unit has a GPS module and can be remotely connected in case of any malfunctioning.

GUIDE POINTER

- Guide pointer can be lowered and raised pneumatically and hydraulically.

WARNING EQUIPMENTS

- 1 unit Led arrow signalization
- 2 units Led warning signalization
- 1 unit on board beacon lamp (It may vary depending on the vehicle model)

COMPRESSOR

Compressor with capacity 1.8 m³ / min meets all the necessary air needs.



ALT 4000 AIRSPRAY

ROAD MARKING MOUNTED EQUIPMENT TRUCK

It is airspray cold paint road marking truck model which can apply cold paints with airspray system. ALT 4000 Airspray can be designed according to the customer truck request and is used especially on road marking applications in the highway.

CAPACITY

- Paint tank capacity 2000 l x 2 units
- Glass beads tank capacity 500 l

COMPRESSOR

- Compressor with capacity 1.8 m³ / min meets all the necessary air needs.

ENGINE

- Min.20 hp diesel engine is used. The engine powers all the hydraulic and electrical systems of the vehicle superstructure.



ALT 4000 AIRSPRAY



The mounted part may vary according to the carrier truck. For the design, please contact the authorized sales personnel.

SLEDGE

- Right and left sliding up-down manuel sledge.

GUNS

- 3 units airless paint gun (2 guns on the left side, 1 gun on the right side)
- 3 units glass beads gun (2 guns on the left side, 1 gun on the right side)
- 1 unit manual gun for handle application (with 15 m hose)
- Line spacing and width can be adjusted by moving the guns up-down, left-right.

LINE CONTROL SYSTEM

- The line control unit is a touch screen and has 5 language options. (Turkish, English, French, Arabic and Russian)
Records to memory all kinds of line forms in highway norms. The control unit has a GPS module and can be remotely connected in case of any malfunctioning.

GUIDE POINTER

- Guide pointer can be lowered and raised pneumatically and hydraulically.

WARNING EQUIPMENTS

- 1 unit Led arrow signalization
- 2 units Led warning signalization
- 1 unit on board beacon lamp (It may vary depending on the vehicle model)

It has CE certificate

RUNWAY MARKING MACHINES



AIRPORT SERIES

ALT 100 AIRPORT

AIRLESS SELF PROPELLED ROAD MARKING MACHINE

PAINT PUMPS

- Hydraulic airless pump is used in the system
- Hydraulic paint pump flow rate 10 l/min x 1 unit
- Max. Pressure 230 bar

ALT 100 Airport is a model which has been exclusively designed for applications of airport runway markings. ALT 100 airport can reach a speed of max 20 km/h. Due to its high maneuverability, it is ideal for runway applications.

By providing high atomization with the airless pump system, clear lines are obtained. Taxiway yellow-black lines can be applied in one step with two airless pump systems. Solvent and water based road marking applications also can be applied.

ENGINE

- Vanguard 18 hp (13kw), air-cooled gasoline engine.
- The machine has a hydrostatic drive.
- The air requirement of the system is 0.125 m³/min. It is provided with the compressor capacity.

CAPACITY

- Paint tank capacity 100 l (50 l x 2)
- Solvent tank capacity 6 l
- Diesel tank capacity 15 l

SLEDGE

- Right or left mounted gun carrying unit.

GUNS

- 2 units airless paint gun
- 1 unit manual gun for handle application (with 15 m hose)

LINE CONTROL SYSTEM

- The line control unit is a touch screen and has 5 language options.
(Turkish, English, French, Arabic and Russian)
Records to memory all kinds of line forms in highway norms.
The control unit has a GPS module and can be remotely connected in case of any malfunctioning.

GUIDE POINTER

- Guide pointer is manual. Laser marking system is optional

WARNING EQUIPMENTS

- Beacon lamp

TECHNICAL SPECIFICATIONS

Length	: 2200 mm
Width	: 1550 mm
Height	: 2250 mm
Weight	: 665 kg
Speed	: Max.20 km/hour



ALT 300 AIRPORT

AIRLESS SELF PROPELLED ROAD MARKING MACHINE



ALT 300 Airport model which is a self-propelled road marking machine has been designed for runway, apron, taxiway applications in airport. It has high maneuverability with speeds up to max 20 km/h.

Solvent-based and water-based road marking applications can be made easily by providing high atomization with the airless pump system.

TECHNICAL SPECIFICATIONS

Length	: 4100 mm
Width	: 2350 mm
Height	: 2000 mm
Weight	: 2200 kg
Speed	: Max.20 km/hour

ENGINE

- Kubota 35 hp (26kw), water-cooled diesel engine.
- The machine has a hydrostatic drive.
- The air requirement of the system is 0.3 m³/min. It is provided with the compressor capacity.

CAPACITY

- Paint tank capacity 300 l (150 l x 2)
- Glass beads tank capacity 100 l
- Diesel tank capacity 40 l

PAINT PUMPS

- 2 Hydraulic airless pumps are used in the system
- Hydraulic paint pump flow rates are 20 l/min x 1 unit and 10 l/min x 1 unit
- Max. Pressure 230 bar

GUIDE POINTER

- Guide pointer is manual. Laser marking system is optional

HYDRAULIC SLEDGE

- Right and left sliding up-down manuel sledge

GUNS

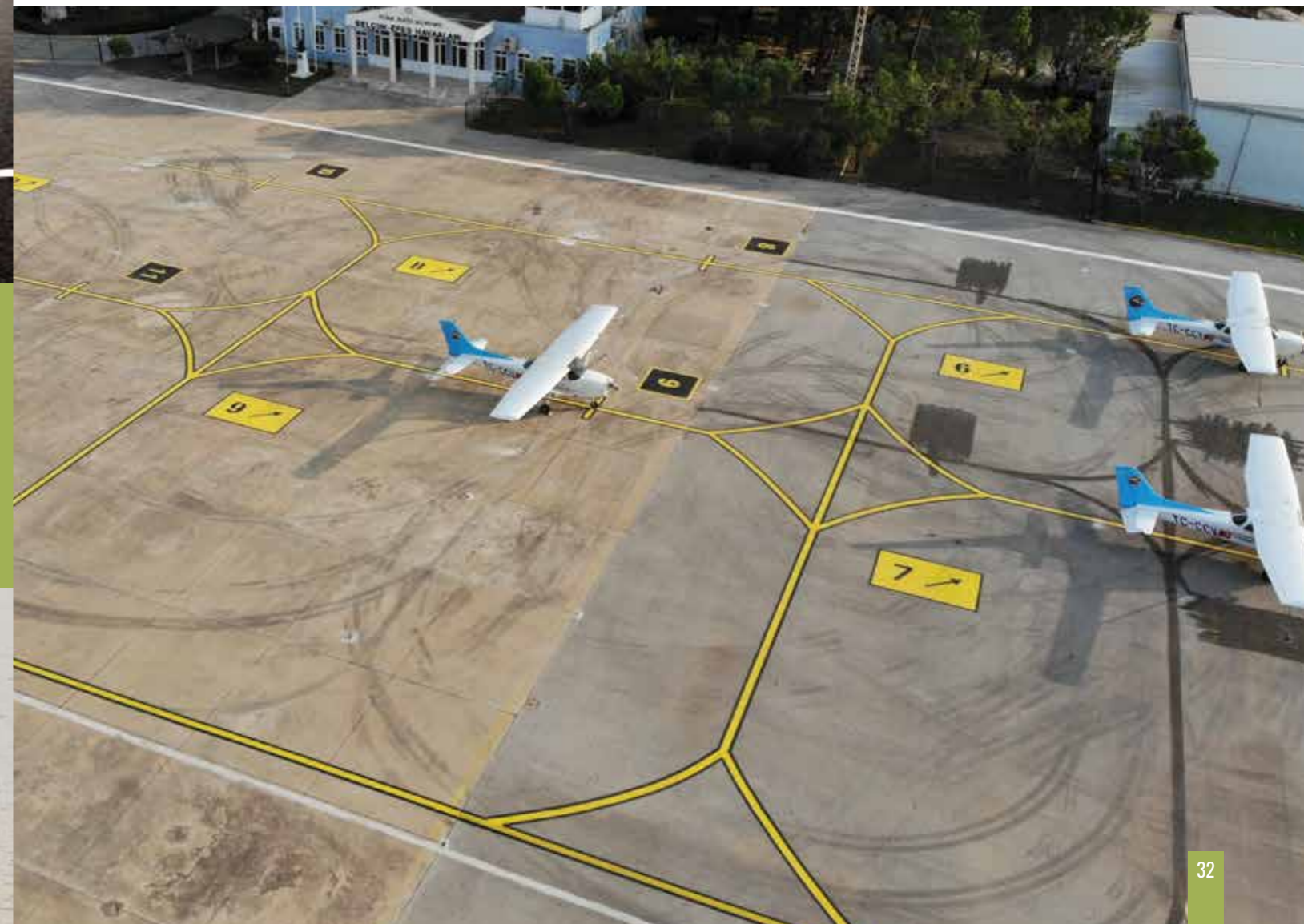
- 3 units automatic airless paint gun
- 3 units automatic glass beads gun
- 1 unit manual gun for handle application (with 15 m hose)

LINE CONTROL SYSTEM

- The line control unit is a touch screen and has 5 language options. (Turkish, English, French, Arabic and Russian)
Records to memory all kinds of line forms in highway norms. The control unit has a GPS module and can be remotely connected in case of any malfunctioning.

WARNING EQUIPMENTS

- LED signalization



ALT 1400 AIRPORT

AIRPORT MARKING MACHINE ALT 1400 (RUNWAY/TAXIWAY)



CAPACITY

- Paint tank capacity 1400 l (1000 l + 400 l)
- Glass beads tank capacity 300 l
- Solvent tank capacity 30 l
- Hydraulic oil tank capacity 150 l
- Dizel tank kapasitesi 160 l

PAINT PUMPS

- Hydraulic paint pump flow rate 26 l/min x 2 units
- Max. Pressure 230 bar

SLEDGE

- Right and left sliding up-down manuel sledge

GUNS

- 5 units automatic airless paint gun
- 5 units automatic glass beads gun
- 1 unit manual gun for handle application (with 15 m hose)

LINE CONTROL SYSTEM

- The line control unit is a touch screen and has 5 language options. (Turkish, English, French, Arabic and Russian)
Records to memory all kinds of line forms in highway norms. The control unit has a GPS module and can be remotely connected in case of any malfunctioning.

GUIDE POINTER

- Guide pointer is manual. Laser marking system is optional

WARNING EQUIPMENTS

- LED signalization
- 2 units beacon lamp

TECHNICAL SPECIFICATIONS

Length	: 5800 mm
Width	: 1900 mm
Height	: 2900 mm
Weight	: 4400 kg
Speed	: Max.20 km/hour



ALT 1400 Airport is a model which has been exclusively designed for applications of airport runway markings. ALT 1400 can reach a speeds of max 20 km/h. Due to its high maneuverability, big paint and glass bead tank capacity, it is ideal for large scale runway applications. By providing high atomization with the airless pump system, clear lines are obtained.

Taxiway yellow-black lines can be applied in one step with two airless pump systems. Thanks to 5 paint guns, 120 cm. and above center lines can also be applied in one step. Solvent and water based road marking applications also can be done.

It is the first airport runway marking machine produced in Turkey!

MOTOR

- Kubota 35 hp(26kw) gücünde su soğutmalı dizel motor aksamı kullanılmaktadır.
- Araç hidrostatik yürüyüşe sahiptir.
- Sistemin hava ihtiyacı 1.8 m3/dak. Kapasitedeki kompresörden sağlanmaktadır.

ENGINE

- Kubota 35 hp (26kw), water-cooled diesel engine.
- The machine has a hydrostatic drive.
- The air requirement of the system is 1.8 m3/min. It is provided with the compressor capacity.



THERMOPLASTIC ROAD MARKING MACHINE



ALT TC 70

HAND PUSHED THERMOPLASTIC FLAT ROAD MARKING MACHINE

ALT TC 70 is a hand pushed thermoplastic machine which is used for small types road marking applications such as pedestrians, parking lots and maintenance works. Homogeneous glass bead process can be applied during the application with the glass beads tank which mounted on machine.

PAINT RESERVOIR, SCREED AND GUN

- 1 unit flat screed
- 1 unit glass beads dispenser
- Paint screed and glass beads apparatus can be mounted on the right.

GUIDE POINTER

- Guide pointer is manual.



TECHNICAL SPECIFICATIONS

Paint Tank Capacity	: 70 lt
Weight	: 150 kg
Glass Beads Tank	: 15 l
Length	: 1100 mm
Width	: 750 mm
Height	: 1100 mm

ALT TC 100

THERMOPLASTIC FLAT AND EXTRUDE SELF PROPELLED ROAD MARKING MACHINE



LINE WIDTH

- Line width is between 10, 12 and 15 cm.

ALT TC 100 is a self-propelled machine which has been exclusively designed and developed for thermoplastic screed road marking applications. ALT TC 100 smoothly lays the thermoplastic road marking paint, which is heated with an external pre heater or in its own boiler.

Thanks to external pre heater, long distance lines can be made, as well as extrude application with a special screed design. Extrude shoulder line applications have a warning features in terms of traffic life safety.

ENGINE

- Kubota 20 hp (15 kw), water-cooled diesel engine.
- The machine has a hydrostatic drive.
- The air requirement of the system is 0.3 m³/min. It is provided with the compressor capacity.

PAINT SCREED AND GLASS BEAD EQUIPMENT

- 1 unit flat screed
- 1 unit glass beads gun
- Paint screed and glass beads apparatus can be mounted on the right.

APPLICATION TEMPERATURE

- Application temperature is between 150-160°C
- Heating method is LPG

OPERATOR SEAT AND WHEEL

- It has one operator seat
- The mechanical wheel can be moved to the right or left

CAPACITY

- Paint tank capacity 100 kg
- Glass beads tank capacity 30 lt
- Fuel tank capacity 15 lt

LINE CONTROL SYSTEM

- The line control unit is a touch screen and has 5 language options. (Turkish, English, French, Arabic and German) Records to memory all kinds of line forms in highway norms.
- There are 5 different options for extrude applications.

GUIDE POINTER

- Guide pointer is manual. Laser marking system is optional

WARNING EQUIPMENTS

- Beacon lamp

TECHNICAL SPECIFICATIONS

Length	: 2200 mm
Width	: 1550 mm
Height	: 2250 mm
Weight	: 750 kg
Speed	: Max.20 km/hour



ALT TC 250 E

THERMOPLASTIC FLAT AND EXTRUDE SELF PROPELLED ROAD MARKING MACHINE



TECHNICAL SPECIFICATIONS

Length	:4300 mm
Width	: 1800 mm
Height	: 2400 mm
Weight	: 1500 kg
Speed	: Max.20 km/hour

ALT TC 250E is a self-propelled machine which has been exclusively designed and developed for urban, intercity and highway thermoplastic screed road marking applications. ALT TC 250E smoothly lays the thermoplastic road marking paint, which is heated with an external pre heater or in its own boiler.

ENGINE

- Kubota 35 hp (26 kw), water-cooled diesel engine.
- The machine has a hydrostatic drive.
- The air requirement of the system is 0.3 m³/min. It is provided with the compressor capacity.

CAPACITY

- Paint tank capacity 500 kg
- Glass beads tank capacity 160 lt
- Fuel tank capacity 40 lt

PAINT SCREED AND GLASS BEAD EQUIPMENT

- 1 unit flat screed
- 1 unit glass beads gun
- Paint screed box and glass beads apparatus can be mounted on the right and left

LINE WIDTH

- Line width is between 10 - 30 cm.

Thanks to external pre heater, long distance lines can be made, as well as extrude application with a special screed design. Extrude shoulder line applications have a warning features in terms of traffic life safety.

APPLICATION TEMPERATURE

- Application temperature is between 150-160°C
- Heating method is LPG

OPERATOR SEAT AND WHEEL

- It has two operator seat
- Hydraulic wheel can be mounted right or left

LINE CONTROL SYSTEM

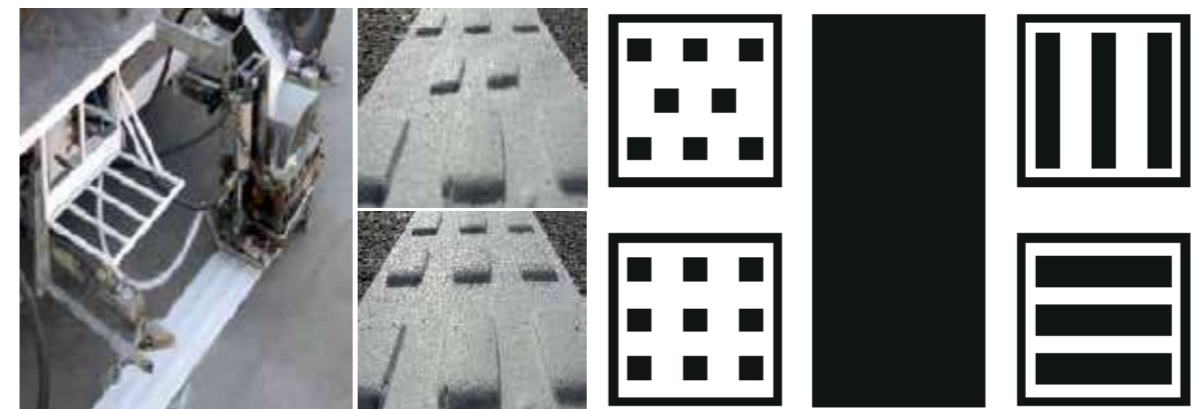
- The line control unit is a touch screen and has 5 language options. (Turkish, English, French, Arabic and German)
Records to memory all kinds of line forms in highway norms.
- There are 5 different options for extrude applications.

GUIDE POINTER

- Guide pointer is manual. Laser marking system is optional

WARNING EQUIPMENTS

- LED signalization



ALT TC 500 E

THERMOPLASTIC FLAT AND EXTRUDE SELF PROPELLED ROAD MARKING MACHINE



ALT TC 500 E is a self-propelled machine which has been exclusively designed and developed for urban, intercity and highway thermoplastic screed road marking applications. ALT TC 500 E smoothly lays the thermoplastic road marking paint, which is heated with an external pre heater or in its own boiler.

Thanks to external pre heater, long distance lines can be made, as well as extrude application with a special screed design. Extrude shoulder line applications have a warning features in terms of traffic life safety.

PAINT SCREED AND GLASS BEAD EQUIPMENT

- 1 unit flat screed
- 1 unit glass beads gun
- Paint screed box and glass beads apparatus can be mounted on the right and left

ENGINE

- Kubota 35 hp (26 kw), water-cooled diesel engine.
- The machine has a hydrostatic drive.
- The air requirement of the system is 0.3 m³/min. It is provided with the compressor capacity.

CAPACITY

- Paint tank capacity 1000 kg
- Glass beads tank capacity 160 lt
- Fuel tank capacity 40 lt

LINE WIDTH

- Line width is between 10 - 30 cm.

APPLICATION TEMPERATURE

- Application temperature is between 150-160°C
- Heating method is LPG

OPERATOR SEAT AND WHEEL

- It has two operator seat
- Hydraulic wheel can be mounted right or left

LINE CONTROL SYSTEM

- The line control unit is a touch screen and has 5 language options. (Turkish, English, French, Arabic and German) Records to memory all kinds of line forms in highway norms.
- There are 5 different options for extrude applications.

GUIDE POINTER

- Guide pointer is manual. Laser marking system is optional

WARNING EQUIPMENTS

- LED signalization

TECHNICAL SPECIFICATIONS

Length	: 4300 mm
Width	: 1800 mm
Height	: 2400 mm
Weight	: 1700 kg
Speed	: Max.20 km/hour



ALT TC 500 S

AIRSPRAY THERMOPLASTIC SELF PROPELLED ROAD MARKING MACHINE

ALT TC 500 S is a self propelled thermoplastic airspray machine which has been exclusively designed for urban, intercity and highway thermoplastic spray road marking applications. With the helical system, the risk of explosion of thermoplastic tanks is eliminated and the safety of our customers is ensured.

The short drying time of thermoplastic paint provides the advantage of application without hindering the traffic and does not harm the environment as the paint components not contain volatile substances.



CAPACITY

- Pressurized or (airless) helical system paint tank 500 kg
- Glass beads tank capacity 160 lt
- Fuel tank capacity 100 lt

GUNS

- 2 units air spray thermoplastic paint guns
- 2 units glass beads guns
- Line spacing and width can be adjusted by moving the guns

SLEDGES

- Manuel sledges which can be opened and closed on right and left sides.

LINE CONTROL SYSTEM

- The line control unit is a touch screen and has 5 language options. (Turkish, English, French, Arabic and German) Records to memory all kinds of line forms in highway norms.
- There are 5 different options for extrude applications.



ENGINE

- Kubota 59 hp (44 kw), water-cooled diesel engine.
- The machine has a hydrostatic drive.
- The air requirement of the system is 1.8 m3/min. It is provided with the compressor capacity.

GUIDE POINTER

- Guide pointer is manual. Laser marking system is optional

WARNING EQUIPMENTS

- LED signalization

TECHNICAL SPECIFICATIONS

Length	: 4300 mm
Width	: 2300 mm
Height	: 2600 mm
Weight	: 2500 kg
Speed	: Max.20 km/hour

ALT TC 500 S SPRAY & FLAT

AIRSPRAY AND FLAT-EXTRUDE THERMOPLASTIC SELF PROPELLED ROAD MARKING MACHINE

ALT TC 500 S Spray & Flat is a thermoplastic spray and flat-extrude model specially designed for urban, intercity and highways. The main feature of the machine is that it has a system that provides both spray and flat-extrude application. With the helical system, the risk of explosion of thermoplastic tanks is eliminated and the safety of our customers is ensured.

The short drying time of thermoplastic paint provides the advantage of application without hindering the traffic and does not harm the environment as the paint components not contain volatile substances.

ENGINE

- Kubota 59 hp (44 kw), water-cooled diesel engine.
- The machine has a hydrostatic drive.
- The air requirement of the system is 1.8 m³/min. It is provided with the compressor capacity.

CAPACITY

- Paint tank 500 kg (airless) with helical system
- Glass beads tank capacity 160 lt
- Fuel tank capacity 100 lt

SLEDGES

- Manuel sledges which can be opened and closed on right and left sides.

LINE CONTROL SYSTEM

- The line control unit is a touch screen and has 5 language options. (Turkish, English, French, Arabic and German)
Records to memory all kinds of line forms in highway norms.
- There are 5 different options for extrude applications.

GUNS

- 2 units air spray thermoplastic paint guns
- 2 units glass beads guns
- Line spacing and width can be adjusted by moving the guns

Flat Model,

- 1 unit flat type helical pump
- 1 unit flat thermoplastic screed
- 1 unit glass beads gun

GUIDE POINTER

- Guide pointer is manual. Laser marking system is optional

WARNING EQUIPMENTS

- LED signalization

TECHNICAL SPECIFICATIONS

Length	: 4300 mm
Width	: 2300 mm
Height	: 2600 mm
Weight	: 2500 kg
Speed	: Max.20 km/hour



ALT TC 500 S CONVERTIBLE

AIRSPRAY THERMOPLASTIC SELF PROPELLED ROAD MARKING MACHINE



TECHNICAL SPECIFICATIONS

Length	: 4300 mm
Width	: 2300 mm
Height	: 2600 mm
Weight	: 2500 kg
Speed	: Max.20 km/hour

ALT TC 500 S Convertible is a cold and thermoplastic spray self-propelled road marking machine specially designed for urban, intercity and highways.

The most important feature is that cold and hot applications can be done with one machine. This feature provides the user with ease of application without wasting time.

ENGINE

- Kubota 59 hp (44 kw), water-cooled diesel engine.
- The machine has a hydrostatic drive.
- The air requirement of the system is 1.8 m³/min. It is provided with the compressor capacity.

CAPACITY

- Paint tank capacity 500 kg
- Glass beads tank capacity 160 lt
- Fuel tank capacity 100 lt

GUNS

- 2 units glass beads gun
Thermoplastic Model:
- 2 units air spray thermoplastic paint guns
- Line spacing and width can be adjusted by moving the guns
Cold:
- 2 unit airspray cold paint gun

SLEDGES

- Manuel sledges which can be opened and closed on right and left sides.

LINE CONTROL SYSTEM

- The line control unit is a touch screen and has 5 language options. (Turkish, English, French, Arabic and German)
Records to memory all kinds of line forms in highway norms.
- There are 5 different options for extrude applications.

GUIDE POINTER

- Guide pointer is manual. Laser marking system is optional

WARNING EQUIPMENTS

- LED signalization



ALT TC 1000 S

AIRSPRAY THERMOPLASTIC SELF PROPELLED ROAD MARKING MACHINE



CAPACITY

- Pressurized or (Airless) Helical system paint tank capacity 1000 kg
- Glass beads tank capacity 300 lt
- Fuel tank capacity 200 lt

ALT TC 1000 S is a self propelled thermoplastic airspray machine which has been exclusively designed for urban, intercity and highway thermoplastic spray road marking applications. With the helical system, the risk of explosion of thermoplastic tanks is eliminated and the safety of our customers is ensured.

The short drying time of thermoplastic paint provides the advantage of application without hindering the traffic and does not harm the environment as the paint components not contain volatile substances.

ENGINE

- Kubota 98 hp (72 kw), water-cooled diesel engine.
- The machine has a hydrostatic drive.
- The air requirement of the system is 3.8 m3/min. It is provided with the compressor capacity.

GUNS

- 2 units air spray thermoplastic paint guns
- 2 units glass beads gun
- Line spacing and width can be adjusted by moving the guns up-down

LINE CONTROL SYSTEM

- The line control unit is a touch screen and has 5 language options. (Turkish, English, French, Arabic and German)
Records to memory all kinds of line forms in highway norms.
- There are 5 different options for extrude applications.

GUIDE POINTER

- Guide pointer is manual. Laser marking system is optional

WARNING EQUIPMENTS

- LED signalization

SLEDGES

- Manuel sledges which can be opened and closed on right and left sides.

TECHNICAL SPECIFICATIONS

Length	: 6000 mm
Width	: 2300 mm
Height	: 2850 mm
Weight	: 5620 kg
Speed	: Max.20 km/hour



ALT TC 1500 S

AIRSPRAY THERMOPLASTIC SELF PROPELLED ROAD MARKING MACHINE



TECHNICAL SPECIFICATIONS

Length	: 6000 mm
Width	: 2300 mm
Height	: 2850 mm
Weight	: 6160 kg
Speed	: Max.20 km/hour

ALT TC 1500 S is a self propelled thermoplastic airspray machine which has been exclusively designed for urban, intercity and highway thermoplastic spray road marking applications. With the helical system, the risk of explosion of thermoplastic tanks is eliminated and the safety of our customers is ensured.

The short drying time of thermoplastic paint provides the advantage of application without hindering the traffic. Used paint does not harm the environment because of the paint components not contain volatile substances.

ENGINE

- Kubota 98 hp (72 kw), water-cooled diesel engine.
- The machine has a hydrostatic drive.
- The air requirement of the system is 3.8 m3/min. It is provided with the compressor capacity.

CAPACITY

- Pressurized or (Airless) Helical system paint tank capacity 1500 kg
- Glass beads tank capacity 300 lt
- Fuel tank capacity 200 lt

GUNS

- 2 units air spray thermoplastic paint guns
- 2 units glass beads gun
- Line spacing and width can be adjusted by moving the guns up-down

SLEDGES

- Manuel sledges which can be opened and closed on right and left sides.

LINE CONTROL SYSTEM

- The line control unit is a touch screen and has 5 language options. (Turkish, English, French, Arabic and German) Records to memory all kinds of line forms in highway norms.
- There are 5 different options for extrude applications.

GUIDE POINTER

- Guide pointer is manual. Laser marking system is optional

WARNING EQUIPMENTS

- LED signalization



ALT TC 3000

THERMOPLASTIC ROAD MARKING MOUNTED EQUIPMENT TRUCK



The mounted part may vary according to the carrier vehicle. For the design, please contact the authorized sales personnel.

ALT TC 3000 is thermoplastic road marking paint application truck model which is commonly used in intercity divided roads and highways. The short drying time of thermoplastic paint provides the advantage of application without hindering the traffic. Used paint does not harm the environment because of the paint components not contain volatile substances. In addition, it is the application truck of thermoplastic paint, which has a higher permanence among road marking paints than one component paints.

It meets the needs of municipalities with one team-one application truck without the need for a pre-heater truck. With the helical system, the risk of explosion of thermoplastic tanks is eliminated and the safety of our customers is ensured. The tank at the back can be used both as a preheater and as an application tank and this feature provides great comfort and ease of operation in our municipal applications.

ENGINE

- Min. 35 hp diesel motor is used. Engine provide power to all hydraulic and electrical systems of the vehicle superstructure.

CAPACITY

- Paint application tank (horizontal or vertical) 1000 kg x 1 unit (airless) with helical system
- Pre - heater or paint application tank 2000 kg x 1 unit (airless) with helical system
- Glass beads tank capacity 500 l

GUNS

- 2 units air thermoplastic paint guns(1 gun on the left side, 1 gun on the right side)
- 2 units glass beads gun (1 gun on the left side, 1 gun on the right side)
- Line spacing and width can be adjusted by moving the guns up-down

COMPRESSOR

- The air requirement of the system is 5 m3/min. It is provided with the compressor capacity.

SLEDGES

- Right and left sliding up-down manuel sledge

LINE CONTROL SYSTEM

- The line control unit is a touch screen and has 5 language options. (Turkish, English, French, Arabic and German) Records to memory all kinds of line forms in highway norms.

GUIDE POINTER

- Guide pointer can be lowered and raised pneumatically or hydraulically.

WARNING EQUIPMENTS

- 1 unit Led arrow signalization
- 2 units Led warning signalization
- 1 unit on board beacon lamp (It may vary depending on the vehicle model)



ALT TC 6000

THERMOPLASTIC ROAD MARKING MOUNTED EQUIPMENT TRUCK



ALT TC 6000 is thermoplastic road marking paint application truck model which is commonly used in intercity divided roads and highways. The short drying time of thermoplastic paint provides the advantage of application without hindering the traffic. Used paint does not harm the environment because of the paint components not contain volatile substances. In addition, it is the application truck of thermoplastic paint, which has a higher permanence among road marking paints than one component paints.

It meets the needs of municipalities with one team-one application truck without the need for a pre-heater truck. The tank at the back can be used both as a preheater and as an application tank and this feature provides great comfort and ease of operation in our municipal applications.

The mounted part may vary according to the carrier vehicle. For the design, please contact the authorized sales personnel.

ENGINE

- Min. 35 hp diesel motor is used. Engine provide power to all hydraulic and electrical systems of the vehicle superstructure.

CAPACITY

- Air spray paint application tank 3000 kg x 1 unit
- Pre - heater 3000 kg x 1 unit air spray paint tank
- Glass beads tank capacity 800 l

GUNS

- 2 units air thermoplastic paint guns(1 gun on the left side, 1 gun on the right side)
- 2 units glass beads gun (1 gun on the left side, 1 gun on the right side)
- Line spacing and width can be adjusted by moving the guns up-down

COMPRESSOR

- The air requirement of the system is 5 m3/min. It is provided with the compressor capacity.

SLEDGES

- Right and left sliding up-down manuel sledge

LINE CONTROL SYSTEM

- The line control unit is a touch screen and has 5 language options. (Turkish, English, French, Arabic and German)
Records to memory all kinds of line forms in highway norms.

GUIDE POINTER

- Guide pointer can be lowered and raised pneumatically or hydraulically.

WARNING EQUIPMENTS

- 1 unit Led arrow signalization
- 2 units Led warning signalization
- 1 unit on board beacon lamp (It may vary depending on the vehicle model)



ALT TC 9000

THERMOPLASTIC ROAD MARKING MOUNTED EQUIPMENT TRUCK



The mounted part may vary according to the carrier vehicle. For the design, please contact the authorized sales personnel.

ALT TC 9000 is thermoplastic road marking paint application truck model which is commonly used in intercity divided roads and highways. The short drying time of thermoplastic paint provides the advantage of application without hindering the traffic. Used paint does not harm the environment because of the paint components not contain volatile substances. In addition, it is the application truck of thermoplastic paint, which has a higher permanence among road marking paints than one component paints.

It meets the needs of municipalities with one team-one application truck without the need for a pre-heater truck. With the helical system, the risk of explosion of thermoplastic tanks is eliminated and the safety of our customers is ensured. The tank at the back can be used both as a preheater and as an application tank and this feature provides great comfort and ease of operation in our municipal applications.

ENGINE

- Min. 35 hp diesel motor is used. Engine provide power to all hydraulic and electrical systems of the vehicle superstructure.

CAPACITY

- Air spray paint application tank 3500 kg x 1 unit
- Pre - heater 3500 kg x 1 unit air spray paint tank
- Glass beads tank capacity 800 l

GUNS

- 2 units air thermoplastic paint guns(1 gun on the left side, 1 gun on the right side)
- 2 units glass beads gun (1 gun on the left side, 1 gun on the right side)
- Line spacing and width can be adjusted by moving the guns up-down

COMPRESSOR

- The air requirement of the system is 5 m³/min. It is provided with the compressor capacity.

SLEDGES

- Right and left sliding up-down manuel sledge

LINE CONTROL SYSTEM

- The line control unit is a touch screen and has 5 language options. (Turkish, English, French, Arabic and German) Records to memory all kinds of line forms in highway norms.

GUIDE POINTER

- Guide pointer can be lowered and raised pneumatically or hydraulically.

WARNING EQUIPMENTS

- 1 unit Led arrow signalization
- 2 units Led warning signalization
- 1 unit on board beacon lamp (It may vary depending on the vehicle model)



Line removal Machines - SİLTEKMA



Siltekma 130



Siltekma T20

Cleaning Area	: 21 cm
Drive	: Manuel
Power Supply	: 230 V 50 - 60 Hz
Weight	: 100 kg
L - W - H	: 100 x 33 x 100 cm
Engine	: 2,2 kw
Cleaning head	: Shot blasting

Siltekma 130

Cleaning Area	: 25 cm
Drive	: Manuel
Power Supply	: Honda Gasoline
Weight	: 125 kg
L - W - H	: 122 x 122 x 66 cm
Engine	: 13 hp
Cleaning head	: Milling

Siltekma 1600

Cleaning Area	: 40 cm
Drive	: Automatic
Power Supply	: Diesel
Weight	: 2032 kg
L - W - H	: 285 x 137 x 157 cm
Engine	: 86 hp
Cleaning head	: Shot blasting & Miling

General Features

It is a machine used for removing airport lines, tire marks and old epoxy paints from the surface without damaging the surface as a result of the rapid impact of steel balls on the surface. Thanks to the dust suction units and magnets, the dust is separated aside, and the steel balls are sent to the ball chamber for reuse. With this application, a clean, high quality workmanship that does not harm the asphalt bitumen layer on the surface is obtained. It can be used on concrete and asphalt floors. With the milling method, paint trace removal, floor cleaning and floor preparation operations can be performed.

Siltekma 130 is a machine that is used on paints removing applications. There is a 13 hp gasoline engine, 1 battery, 1 depth adjustment lever and a scraper drum that performs the removing operation on the machine which is controlled manually by an operator. There is also a safety rope for emergencies.

With the Siltekma 130 machine, one & two component and thermoplastic paints can be removed and the removing process is performed by adjusting it according to the line thickness.

High Pressure Line Cleaning Truck



Siltekma 2750 - 18000

Carrier truck	: AXOR 3340
Engine Power	: 401 hp
Cleaning head	: 2 units
Fuel Type	: Diesel
Clean Water Tank capacity	: Optional
Dirty Water Tank capacity	: Optional
Maximum Pressure	: 2750 bar

The most difficult and most important point of a successful road line removing is the effective cleaning of the asphalt / concrete surface without damage. Our Siltekma 2750 - 18000 model line removal truck allows the road lines to be removed smoothly with high pressure water jet technology. It is fast and effective, while at the same time avoiding exposure to chemicals and waste materials, simplifying cleaning and leaving a clean surface.

Line removal Machines - Jettekma



The Cleaning machine which is called Jettekma 500S-1000, is independet from vehicle and its usage is very simple.

What can be done with Jettekma 500S-1000;

- Cleaning of polluted walls from exhaust fumes pollution in underpasses and bridges,
- Removing graffities,
- Removing unauthorized advertisements,
- Cleaning of engine blocks in repairshops,
- The cleaning of old paints on painted/ unpainted bordure,
- The cleaning of bazaar areas,
- The cleaning of construction equipments,
- The cleaning of park pools,
- The cleaning of garbage containers,
- The cleaning of road markings, can be done easily.

With Jettekma 500S-1000, you can apply with both hot and cold water.

Jettekma 500S-1000

Max. Pressure	: 500 bar
Max. Flow Rate	: 15 lt / min
Engine Power	: 23 hp 2 cylinder
Fuel Consumption	: 4 lt /h
Fuel Tank Capacity	: 50 lt diesel
Fuel Type	: diesel
Max. Temperature	: 110 °C
Supply Voltage	: 12 V
Water Tank capacity	: 1000 l
Sand Blasting Tank Capacity	: 50 kg

Jettekma 500S-1000:
You can do wet sandblasting applications, thanks to wet sandblasting apparatus. In this way, you can perform the cleaning process without removing the old painted signaling poles.

Line Cleaning Truck - Jettekma



This is our model "Jettekma 500S- 11000" line cleaning truck which has indispensable features for municipalities. It is more efficient to clean the road lines that become black and dirty due to city pollution, asphalt blemishes and the use of tire coatings instead of reapplying them. In this way, it is possible to reduce both paint and labor costs.

Based on Altekma's years of experience in the sector, it is a successful result of R&D studies.

Jettekma 500S-11000

Carrier truck	: 1518 ATEGO Mercedes
Engine Power	: 130 hp
Guns	: 4 units water gun Manuel gun for handle applications
Water Pump Pressure	: Usable between 200 - 500 bar
Fuel Type	: Diesel
Clean Water Tank capacity	: 4500 l
Dirty Water Tank capacity	: 1500 l
Vacuum System	: Hydraaulic Adjustable Cleaning System
Fuel Rank	: 120 l





Cone Arranging and Collecting Machine



ALT-KT 5090

The cone arranging and collecting operations were previously carried out by manually. After the work of the Altekma R&D team, equipment was designed to arrange and collect the cones at desired intervals. As a result of intensive and careful work, the "Cone arranging and collecting machine" was produced.

Thanks to the digital control unit is possible to adjust the size range and perform the cone arranging and collecting process. The height of the cones can be adjusted according to the dimensions of 50, 70 and 90.

By using the open box panel van, arranging and application can be done from both the right and left sides.

After the necessary adjustments done, the operator in the chassis of the vehicle can perform the most practical and fastest way of arranging and collecting the cones during the application.



Thermoplastic Pre-Heaters



ALT-600-1

Tank Capacity : 600 kg
Hydraulic Mixer : 1
Heating System : LPG
Temperature Range : 0-250C°



ALT-600-2

Tank Capacity : 600 kg x 2
Hydraulic Mixer : 2
Heating System : LPG
Temperature Range : 0-250C°



ALT-2000-1

Tank Capacity : 2000 kg
Hydraulic Mixer : 1
Heating System : Diesel
Temperature Range : 0-250C°

In the preliminary stage of the thermoplastic paint, our pre - heaters designed for the application team in order to melt the paint with LPG and burner. Melted paint in hot oil-walled boilers is transferred to application tanks and apparatus by helic pumps or by its own gravity. Thanks to the melted paint transferred from the pre-heaters to the boilers of the thermoplastic road marking truck, the daily paint capacity is increased and the application performance is increased. In thermoplastic applications, the big pre-heater capacity rather than the big application tank affects the daily application performance.

* Pre-heater can be manufactured according to the specifications required

Two Component Paint Flat, Structured and Profiled Machines



2K Paint Flat Machine



2K Structured Machine



2K Profiled Machine

It is used in the application of pedestrian crossings, stop lines, speed breakers, arrows and symbols that play a very important role in creating traffic safety with two components road marking machines.

With these machines, it is possible to easily apply in film thicknesses from 1 mm to 1 cm. Two component paint application machines are produced as three models (flat, structured and profiled).



Glass Beads Dispenser



ALT CK-1050

Glass Beads Structure Machine ALT-CK 1050
Glass beads apparatus can be adjusted in the range of 10-50 cm. ALT CK-1050 is an ideal machine for applying glass beads on a road marking paint practically and homogeneously.

- Homogeneous application with 180-200 gr glass beads per Sq m (m²)
- It prevents darkening due to more consumption of glass beads
- Provides an easy application
- Prevents wasting of glass beads



Spray Tube Tools

ALT ST

It is applied by spraying the spray paint tubes used in road marking paints and general paint works. The gun is a 100% plastic product. It is suitable and practical for horizontal road marking applications, plastic materials, personal walls, two awnings, wooden materials, profiles, sheet metal and chassis.



ALT ST 1

ALT-ST 1 is able to make applications with big and small size sprays. It can be applied lines in the range of 8-15 cm. The line width can be changed by adjusting the distance of the spray tube and the spacing of the wheels. ALT-ST 1, which can also be used as 2 wheels when desired, is suitable and practical for application in factory indoor and outdoor areas, construction sites, private parking lots, parks and gardens.



ALT ST 2

ALT-ST 2 is able to make applications with big and small size sprays. With ALT-ST 2 apparatus large and small size sprays are used to make applications. When the height of the spray tank is adjusted, the line width can be changed in the range of 8-15 cm and the application can be realized. It is suitable and practical for application in factory indoor and outdoor areas, construction sites, private parking lots, parks and gardens.



Accessories and Spray Guns



Altekma
Airless Road Marking Gun



Altekma
Air Spray road Marking Gun



Altekma
Thermoplastic Road Marking Gun



Altekma
Glass Beads Gun



Altekma
Touch-screen Line Control Panel

Touch-screen technology
Daily usage of painting display device
English and Turkish menu option
5 guns control
Emergency stop button





Aegean Regional Directorate

Yenişehir Mh. 1201 / 1 Sk. Temsil Plaza İş Merkezi
No:4 Z-42, 35110 Konak / İzmir / TURKEY
Phone: +90 232 469 71 74
Fax: +90 232 469 62 86

Marmara Regional Directorate

Bahçelievler Mh. Polen Sk. No:30 Pendik / İstanbul / TURKEY
Phone: +90 216 446 94 10
Fax: +90 216 446 94 11

Central Anatolia Regional Directorate

Ostim Org. San. Bölgesi 1274 SK. No:1 Yenimahalle / Ankara / TURKEY
Phone: +90 312 394 22 73
Fax: +90 312 394 23 71



altekmagroup



altekmagroup



Altekma Group



Altekma Group



altekmagroup



OUR LINE IS
RIGHTEOUSNESS OUR PRINCIPLE IS
QUALITY

Bahçelievler Mah. Bağımsızlık Cad. No:27 Yazı başı Torbalı/ İzmir / Turkey
Phone: +90 232 853 85 78 1 Fax: +90 232 853 96 59
Url: www.altekma.com.tr E-Mail: altekma@altekma.com.tr



www.altekmagroup.com