



SIGNATEKMA®

'There is someone who guides you on the road'

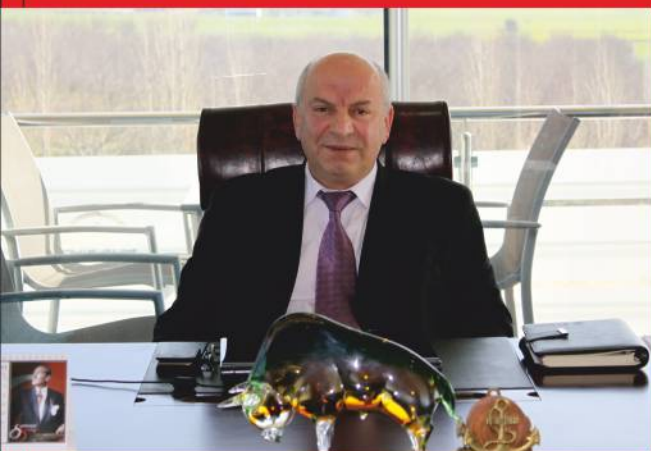


Bahçelievler Mah. Bağımsızlık Cad. No:27 Yazıbaşı Torbalı / İzmir
Telefon: +90 232 853 85 78 | Fax: +90 232 853 96 59
www.altekmagroup.com | info@signatekma.com.tr

ROAD MARKING PAINTS CATALOG

www.altekmagroup.com





Signatekma was founded in 2007 within the Altekma Group, on the land of 20.000 m² in the Torbalı district of İzmir. Signatekma started its activities with the aim of production of road marking paint and supply of traffic safety materials.

Signatekma has wide range of products;

- Solvent Based Road Marking Paint (Alkyd, Acrylic Resin Based),
- Water Based Road Marking Paints,
- Two Component Road Marking Paints,
- Three Component Road Marking Paints,
- Thermoplastic Road Marking Paints
- Tennis Court, Turf and Bicycle Road Paints,
- Floor Coating Paint,
- Spray Tube Line Paints
- Glass Beads, Thinner and Hardener

Signatekma is in the leading position with the production of road marking paints, staff, quality and high production capacity in Turkey and peripheral countries. The need for specialized companies is very important to meet to need of highway network which is developing in our country and the necessity of precaution of traffic safety in accordance with the World standards. Signatekma began process with this vision and became the solution partner in this area.

Signatekma continues its research and development works to preserve of position in this sector with the sense of importance of road marking paint. Road marking paints, road marking machines and traffic signs are profession of our group firms and they manufacture along the world class products, they also contribute the production of new and environment friendly products in our country. As Altekma Group, we are continuing to pursue our leadership in the sector with our excitement in the first day, our awareness and innovative perspective that we have created with the slogan "Our Line is Righteousness, Our Principle is Quality".



Scan the QR code to watch our introduction film



Scan the QR code for our documents

SIGNAWALL® ALKYD BASED COLUMN AND CURB PAINT	02
SIGNALINE® ALKYD BASED ROAD MARKING PAINT	03
CONSTANCE® MMA BASED ACRYLIC ROAD MARKING PAINT	04
MF 21 FLAT® FLAT TWO COMPONENT ROAD MARKING PAINT	05
MF 21 PROFILED® PROFILED TWO COMPONENT ROAD MARKING PAINT	06
MF 21 STRUCTURED® STRUCTURED TWO COMPONENT ROAD MARKING PAINT	07
MF 5® SPRAY THREE COMPONENT ROAD MARKING PAINT	08
MF 35® SPRAY THREE COMPONENT ROAD MARKING PAINT	09
PLUVIO ATLANTIS® SPRAY TWO COMPONENT ROAD MARKING PAINT	10
MF 98:2® SPRAY TWO COMPONENT ROAD MARKING PAINT	11
SINOJET ARGANCE® THERMOPLASTIC SPRAY ROAD MARKING PAINT	12
SINOJET SEVRE® THERMOPLASTIC FLAT ROAD MARKING PAINT	13
SINOJET DOT LINE® THERMOPLASTIC DOT LINE ROAD MARKING PAINT	14
HYDRAL® WATER-BASED ROAD MARKING PAINT	15
AIRPORT RUNWAY AND TAXIWAY PAINT® MMA ACRYLIC RESIN BASED AIRPORT RUNWAY AND TAXIWAY LINE PAINT	16
OHS LINE PAINT MMA ACRYLIC RESIN BASED WORK SAFETY PAINT	17
SAFETYLINE WORK SAFETY SPRAY PAINT	18
SIGNATUBE SPRAY LINE PAINT	19
SIGNAFLOOR® MMA BASED FLOOR COATING PAINT	20
MF 25 SPRAY® TWO COMPONENT, MMA ACRYLIC RESIN BASED, SPRAY BICYCLE, TRAM, WALKING PAINT.	21
MF 25 FLAT® TWO COMPONENT, MMA ACRYLIC RESIN BASED, BICYCLE, TRAM, WALKING PAINT.	22
GRASSLINE GRASS FIELD PAINT	23
COURTLINE COURT PAINT	24
PRIMER ACRYLIC BASED PRIMER	25
TINSOL® THINNING THINNER TINEX® CLEANING THINNER	26
CAMTEKMA® GLASS BEADS®	27-28
NECESSARY ELEMENTS FOR SUCCESS IN APPLICATION.	29
POINTS TO TAKE INTO ACCOUNT BEFORE APPLICATION POTENTIAL POST-APPLICATION PROBLEMS AND THE REASONS	30
USEFUL INFORMATION	31
ALTEKMA SPORTS CLUB	32
ALTEKMA I PAINT SPRAYING AND ROAD MARKING MACHINES	33
BOYTEKMA I OUR HORIZONTAL MARKING COMPANY	34
YOLTEKMA I OUR VERTICAL MARKING COMPANY	35
BOYAMAK BOYA MAK. LTD. ŞTİ	36



SIGNAWALL®

ALKYD BASED COLUMN AND CURB PAINT

"Signawall" cold paint is based on solvent and alkyd resin. This paint is used for all curb painting and also used for wall and column painting in parking areas. Any required color can be produced. Curb painting applications have a great importance of increasing the pedestrian and traffic safety. Directions are provided by numbering and painting columns in parking garages. The drying occurs by evaporation of the solvent on the surface.



TDS, MSDS, Technical specifications.



PRODUCT INFORMATION

- **Property:** Alkyd resin-based curb and column paint.
- **Wet Paint Consumption Amount:** 350-700 g/m² (It changes depending on surface texture and depth.)

APPLICATION INFORMATION

- **Surface:** Curb, column, wall
- **Application Equipment:** Airless or pneumatic machine, brush, roll
- **Dilution:** It is used without dilution
- **Cleaning:** Tinex (Cellulosic thinner)

APPLICATION CONDITIONS

- **Temperature:** 5°C and 40°C
- **Dry Time:** 20 min. (23°C ve % 49 humidity, 10 km/h wind)

PHYSICAL PROPERTIES

- **Viscosity (KU):** 90 ± 10 (23°C ± 2)
- **Density:** 1,60 g/ml ± 0,1
- **Solid Matter Percentage:** %77 ± 3

PACKAGE AND STORAGE CONDITIONS

- **Package:** 25 Kg / can. It is sold exclusively in 1500 kg IBCs
- **Storage:** Products should be stored in their original packaging, in a dry, cool, well-ventilated place, away from sources of heat and sparks.
- **Shelf Life:** The date of expiry is one year from the production date



SIGNALINE®

ALKYD BASED ROAD MARKING PAINT

"Signaline" cold road marking paint is based on solvent and alkyd resin. This paint is used for marking of all kinds of urban roads and expressways, parking lots and other areas. This one component road marking paint is applied by spraying on the surface and reflects light thanks to glass beads being dropped on the paint. Depending on the pigments used in it, the paint may be in any color. This solvent-based paint is applied in approximately 350 - 800 micron of thickness with spraying. The drying occurs by evaporation of the solvent on the surface.



TDS, MSDS, Technical specifications.



It has been formulated to meet the requirements of the **EN 1871**, **EN 1436** and Highways Technical

PRODUCT INFORMATION

- **Property:** Alkyd resin-based cold road marking paint.
- **Wet Paint Consumption Amount:** 500-900 g/m² (It changes depending on surface texture and depth.)

APPLICATION INFORMATION

- **Surface:** Asphalt and concrete
- **Application Equipment:** Airless or pneumatic machine, brush, roll
- **Thinning:** It is used without thinning.
- **Cleaning:** Tinex (Cellulosic thinner)

APPLICATION CONDITIONS

- **Temperature:** Between 5°C and 40°C
- **Dry Time:** 20 min. (23°C ve % 49 humidity, 10 km/h wind)

PHYSICAL PROPERTIES

- **Viscosity (KU):** 90 ± 10 (23°C ± 2)
- **Density:** 1,60 g/ml ± 0,1
- **Solid Matter Percentage:** %75 ± 3

PACKAGE AND STORAGE CONDITIONS

- **Package:** 25 kg / can. It is sold exclusively in 1500 kg IBCs
- **Storage:** Products should be stored in their original packaging, in a dry, cool, well-ventilated place, away from sources of heat and sparks.
- **Shelf Life:** The date of expiry is one year from the production date

RAL 9016

RAL 5015

RAL 1023

RAL 6001

RAL 9017

RAL 2004

RAL 3020

RAL 7040

It can be produced according to the color codes selected from the RAL catalogue.

RAL 9016

RAL 5015

RAL 1023

RAL 6001

RAL 9017

RAL 2004

RAL 3020

RAL 7040

It can be produced according to the color codes selected from the RAL catalogue.



CONSTANCE®

MMA BASED ACRYLIC ROAD MARKING PAINT

"Constance" cold road marking paint is based on solvent and MMA acrylic resin. This paint can be used for marking of all kinds of urban roads and express ways, parking lots and other areas, however, it should not be applied on alkyd based cold road marking paint. This one component road marking paint is applied by spraying on the surface and reflects light thanks to glass beads being dropped on the paint. This solvent-based paint is applied in approximately 350 – 800 micron of thickness with spraying. The drying occurs by evaporation of the solvent on the surface.



TDS, MSDS, Technical specifications.

PRODUCT INFORMATION

- **Property:** MMA acrylic resin based cold road marking paint
- **Wet Paint Consumption Amount:** 500-900 g/m² (It changes depending on surface texture and depth.)
- **Glass Bead Consumption Amount:** 350 g/m²

APPLICATION INFORMATION

- **Surface:** Asphalt and concrete
- **Application Equipment:** Airless or pneumatic machine, brush, roll
- **Thinning:** It is used without thinning.
- **Cleaning:** Tinex (Cellulosic thinner)
- It should not be applied over alkyd based cold road marking paint.

APPLICATION CONDITIONS

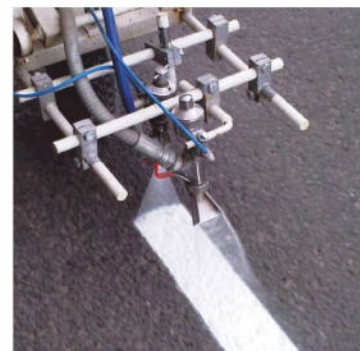
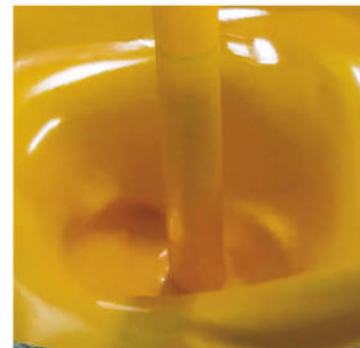
- **Temperature:** Between 5°C and 40°C
- **Dry Time:** 20 min. (23°C and % 49 humidity, 10 km/h wind)

PHYSICAL PROPERTIES

- **Viscosity (KU):** 90 ± 10 (23°C ± 2)
- **Density:** 1,60 g/ml ± 0,1
- **Solid Matter Percentage:** %75 ± 3

PACKAGE AND STORAGE CONDITIONS

- **Package:** 25 kg / can, the sales are made in IBC's of 1500 kg in special conditions.
- **Storage:** Products should be stored in their original packaging, in a dry, cool, well-ventilated place, away from sources of heat and sparks.
- **Shelf Life:** The date of expiry is one year from the production date.



It has been formulated to meet the requirements of the **EN 1871**, **EN 1436** and Highways Technical

RAL 9016

RAL 5015

RAL 1023

RAL 6001

RAL 9017

RAL 2004

RAL 3020

RAL 7040

It can be produced according to the color codes selected from the RAL catalogue.



MF 21 FLAT®

FLAT TWO COMPONENT ROAD MARKING PAINT

Our two-component road marking paint, "MF 21", is an ideal solution for crosswalks, stop lines and rumble strips, which play an important role in traffic safety. Two component road-marking paints have high physical and chemical resistance and stick to the surface by hardener with the reaction that occurs as a result of mixing the components in certain amounts. The thickness of paint film can be between 1 mm and 5 mm. Due to its high resistance, it can maintain its permanence even under heavy traffic conditions. The drying occurs by the chemical reaction that is generated by mixing the powder B component with liquid A component. Thus, the paint must be applied within maximum 7 minutes after mixing the B component.



TDS, MSDS, Technical specifications.

PRODUCT INFORMATION

- **Property:** MMA resin-based road marking paint
- **Wet Paint Consumption Amount:** Depending upon thickness of paint film 4 kg/m² for 2 mm, 6 kg/m² for 3 mm
- **Glass Bead Consumption Amount:** 500 g/m²

APPLICATION INFORMATION

- **Surface:** Asphalt and concrete. (The concrete must have been laid for at least 1 month ago.)
 - **Application Equipment:** It is applied with special application apparatus and machinery.
 - **Thinning:** It is used without thinning.
 - **Cleaning:** Tinex (Cellulosic thinner)
- Make sure that the paint is properly mixed with the hardener. Apply immediately after mixing /within max.7 min.

APPLICATION CONDITIONS

- **Surface Temperature:** Must be below 35°C
- **Dry Time:** Between 15 min. and 25 min. (Do not apply in the day time in summer and hot air.)

PHYSICAL PROPERTIES

- **Viscosity (Daniel):** 13 ± 2 (23°C ± 2)
- **Density:** 2,00 g/ml ± 0,1

PACKAGE AND STORAGE CONDITIONS

- **Package:** 25 kg / can
- **Storage:** Products should be stored in their original packaging, in a dry, cool, well-ventilated place, away from sources of heat and sparks.
- **Shelf Life:** The date of expiry is one year from the production date



It has been formulated to meet the requirements of the **EN 1871**, **EN 1436** and Highways Technical

RAL 9016

RAL 5015

RAL 1023

RAL 6001

RAL 9017

RAL 2004

RAL 3020

RAL 7040

It can be produced according to the color codes selected from the RAL catalogue.



MF 21 PROFILED®

PROFILED TWO COMPONENT ROAD MARKING PAINT

"MF 21 Profiled" profile line two-component road marking paint provides a cautionary area for the driver by creating consecutive and regular thicknesses. Thus, the driver, who passes over the profile line surface, will avoid from this cautionary line and quickly go back to the designated lane. It has been formulated to meet the requirements of the Turkish Highways General Directorate's highways technical specifications, TS EN 1871 and TS EN 1436 standards. The drying occurs by the chemical reaction that is generated by mixing the powder B component with liquid A component. Thus, the paint must be applied within maximum 7 minutes after mixing the B component.

PRODUCT INFORMATION

- **Property:** MMA resin-based road marking paint
- **Wet Paint Consumption Amount:** Depending on profile intervals and thickness 8-14 kg/m²
- **Glass Bead Consumption Amount:** 500 g/m²

APPLICATION INFORMATION

- **Surface:** Asphalt and concrete. [The concrete must have been laid far at least 1 month ago.]
 - **Application Equipment:** It is applied with special application apparatus and machinery
 - **Thinning:** It is used without thinning.
 - **Cleaning:** Tinex [Cellulosic thinner]
- Make sure that the paint is properly mixed with the hardener. Apply immediately after mixing /within max. 7 min.

APPLICATION CONDITIONS

- **Surface Temperature:** Must be below 35°C
 - **Dry Time:** Between 15-25 min.
- [Do not apply in the day time in summer and hot air]

PHYSICAL PROPERTIES

- **Viscosity (Daniel):** 11 ± 2 [23°C ± 2]
- **Density:** 2,00 g/ml ± 0,1

PACKAGE AND STORAGE CONDITIONS

- **Package:** 25 kg / can
- **Storage:** Products should be stored in their original packaging, in a dry, cool, well-ventilated place, away from sources of heat and sparks.
- **Shelf Life:** The date of expiry is one year from the production date



It has been formulated to meet the requirements of the **EN 1871**, **EN 1436** and Highways Technical

RAL 9016

RAL 5015

RAL 1023

RAL 6001

RAL 9017

RAL 2004

RAL 3020

RAL 7040

It can be produced according to the color codes selected from the RAL catalogue.



MF 21 STRUCTURED®

STRUCTURED TWO COMPONENT ROAD MARKING PAINT

"MF 21 Structured" two component road marking paint creates a rough application surface and this enhances the reflection power of the glass beads splattered on the rough surface. It has been formulated to meet the requirements of the Turkish Highways General Directorate's highways technical specifications, TS EN 1871 and TS EN 1436 standards. Two component road marking paints have high physical and chemical resistance and stick to the surface by hardener with the reaction that occurs as a result of mixing the components in certain amounts. The drying occurs by the chemical reaction that is generated by mixing the powder B component with liquid A component. Thus, the paint must be applied within maximum 10 minutes after mixing the B component.

PRODUCT INFORMATION

- **Property:** MMA resin-based road marking paint
- **Wet Paint Consumption Amount:** Depending on grain's rarity and thickness 3-7 kg/m²
- **Glass Bead Consumption Amount:** 500 g/m²

APPLICATION INFORMATION

- **Surface:** Asphalt and concrete. [The concrete must have been laid far at least 1 month ago.]
 - **Application Equipment:** It is applied with special application apparatus and machinery
 - **Thinning:** It is used without thinning.
 - **Cleaning:** Tinex [Cellulosic thinner]
- Make sure that the paint is properly mixed with the hardener. Apply immediately after mixing /within max. 7 min.

APPLICATION CONDITIONS

- **Surface Temperature:** Must be below 35°C
 - **Dry Time:** Between 10 min. and 25 min.
- [Do not apply in the day time in summer and hot air]

PHYSICAL PROPERTIES

- **Viscosity (Daniel):** 11 ± 2 [23°C ± 2]
- **Density:** 2,00 g/ml ± 0,1

PACKAGE AND STORAGE CONDITIONS

- **Package:** 25 kg / can
- **Storage:** Products should be stored in their original packaging, in a dry, cool, well-ventilated place, away from sources of heat and sparks.
- **Shelf Life:** The date of expiry is one year from the production date



It has been formulated to meet the requirements of the **EN 1871**, **EN 1436** and Highways Technical

RAL 9016

RAL 5015

RAL 1023

RAL 6001

RAL 9017

RAL 2004

RAL 3020

RAL 7040

It can be produced according to the color codes selected from the RAL catalogue.



A

B



It has been formulated to meet the requirements of the **EN 1871**, **EN 1436** and Highways Technical

MF 5®

SPRAY THREE COMPONENT ROAD MARKING PAINT

"MF 5" spray three component, new generation road marking paint, combines the ease of application of cold road marking paint and longevity of two component road marking paint and fast drying of thermoplastic road marking paint. It has been formulated to meet the requirements of the Turkish Highways General Directorate's highways technical specifications, TS EN 1871 and TS EN 1436 standards. Especially, this product is the best solution for renewing the two component road marking paint. Both of two components of MF 5 is liquid. Chemical reaction occurs with adding hardener to B compenent and mixing with A component.

PRODUCT INFORMATION

- **Component A:** Activated MMA acrylic based road marking paint.
- **Component B:** MMA Acrylic based road marking paint.
- **Component C:** Hardener
- **Wet Paint Consumption Amount:** 1000 g (A)/m²+1000 g (B)/m²
- **Glass Bead Consumption Amount:** 500 g/m²

APPLICATION INFORMATION

- **Surface:** Asphalt and concrete.
- **Application Equipment:** Please consult with us.
- **Thinning:** It is used without thinning.
- **Cleaning:** Tinex (Cellulosic thinner)

APPLICATION CONDITIONS

- **Surface Temperature:** Must be below 35°C (Do not apply in the day time in summer and hot air!)
- **Dry Time:** 5 min. – 12 min. (humidity: % 85)

PHYSICAL PROPERTIES

- **Viscosity (KU):** 95 ±10 (23°C ± 2)
- **Density:** 1,75 g/ml ± 0,1

PACKAGE AND STORAGE CONDITIONS

- **Component A:** 25 kg / can
- **Component B:** 25 kg / can
- **Component C:** 25 kg / package
- **Storage:** Products should be stored in their original packaging, in a dry, cool, well-ventilated place, away from sources of heat and sparks.
- **Shelf Life:** The date of expiry is one year from the production date

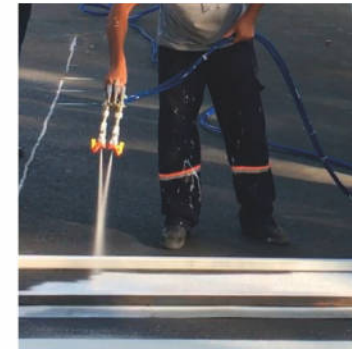


TDS, MSDS, Technical specifications.



A

B



It has been formulated to meet the requirements of the **EN 1871**, **EN 1436** and Highways Technical

MF 35®

SPRAY THREE COMPONENT ROAD MARKING PAINT

"MF 35" spray three component road marking paint combines the ease of application of cold road marking and longevity of thermoplastic road marking paint. If it is applied by spraying with airless system, this paint is an easy-to-apply product together with the existing equipment of the Municipalities. Before it comes into contact with the surface, it reacts with both air-confluent and liquid components. MF 35 also creates an anti-slip zone when applied together with small pebbles.

PRODUCT INFORMATION

- **Component A:** Activated MMA acrylic based road marking paint.
- **Component B:** MMA Acrylic based road marking paint.
- **Component C:** Hardener
- **Wet Paint Consumption Amount:** 1000 g (A)/m²+1000 g (B)/m²
- **Glass Bead Consumption Amount:** 500 g/m²

APPLICATION INFORMATION

- **Surface:** Asphalt and concrete.
 - **Application Equipment:** Please consult with us.
 - **Thinning:** It is used without thinning.
 - **Cleaning:** Tinex (Cellulosic thinner)
- Please consult us for curing time between 25-35 minutes.

APPLICATION CONDITIONS

- **Surface Temperature:** Must be below 35°C
- **Dry Time:** Between 25 min. and 35 min. (Do not apply in the day time in summer and hat air)

PHYSICAL PROPERTIES

- **Viscosity (KU):** 95 ±10 (23°C ± 2)
- **Density:** 1,75 g/ml ± 0,1

PACKAGE AND STORAGE CONDITIONS

- **Component A:** 25 kg / can
- **Component B:** 25 kg / can
- **Component C:** 25 kg / package
- **Storage:** Products should be stored in their original packaging, in a dry, cool, well-ventilated place, away from sources of heat and sparks.
- **Shelf Life:** The date of expiry is one year from the production date



TDS, MSDS, Technical specifications.

RAL 9016

RAL 5015

RAL 1023

RAL 6001

RAL 9017

RAL 2004

RAL 3020

RAL 7040

It can be produced according to the color codes selected from the RAL catalogue.

RAL 9016

RAL 5015

RAL 1023

RAL 6001

RAL 9017

RAL 2004

RAL 3020

RAL 7040

It can be produced according to the color codes selected from the RAL catalogue.



PLUVIO ATLANTIS®

SPRAY TWO COMPONENT ROAD MARKING PAINT

"Pluvio Atlantis" spray two component road marking paint combines the ease of application and extra reflection power of cold road marking especially in rainy regions. If it is applied by spraying with airless system, this paint is an easy-to-apply product together with the existing equipment of the Municipalities. When Component A is liquid, Component B is a glass bead covered with hardener. Component B (solid) which will be splattered over component A (liquid) will initiate the reaction of the paint.



TDS, MSDS, Technical specifications.

PRODUCT INFORMATION

- **Component A:** Sprayable two component road marking machine.
- **Component B:** Glass bead covered with hardener.
- **Consumption Amount of Component A:** 1000 g/m²
- **Consumption Amount of Component B:** 1000 g/m²

APPLICATION INFORMATION

- **Surface:** Asphalt and concrete.
- **Application Equipment:** Airless paint spray gun, glass beads splatter gun.
- **Spraying & Injection:** Airless paint spray gun, glass beads splatter gun, glass beads spray gun.
- **Cleaning:** Tinex (Cellulosic thinner)

APPLICATION CONDITIONS

- **Surface Temperature:** Must be below 35°C. (Do not apply in the day time in summer and hot air)
- **Dry Time:** 20-30 min. (Air temperature 18°C, surface temperature 20°C, 6 km/h wind)

PHYSICAL PROPERTIES

- **Viscosity (KU):** 95 ± 10 (23°C ± 2)
- **Density:** 1,68 g/ml ± 0,1

PACKAGE AND STORAGE CONDITIONS

- **Component A:** 25 kg / can
- **Component B:** 20 kg / pail
- **Storage:** Products should be stored in their original packaging, in a dry, cool, well-ventilated place, away from sources of heat and sparks.
- **Shelf Life:** The date of expiry is one year from the production date



It has been formulated to meet the requirements of the **EN 1871**, **EN 1436** and Highways Technical

RAL 9016

RAL 5015

RAL 1023

RAL 6001

RAL 9017

RAL 2004

RAL 3020

RAL 7040

It can be produced according to the color codes selected from the RAL catalogue.



MF 98:2®

SPRAY TWO COMPONENT ROAD MARKING PAINT

"MF 98:2" spray two component road marking paint combines the ease of application of cold road marking and longevity of thermoplastic road marking paint. If it is applied by spraying with airless system, this paint is an easy-to-apply product together with the existing equipment of the Municipalities with a small modification. Before it comes into contact with the surface, it reacts with both air-confluent and liquid components.



TDS, MSDS, Technical specifications.

PRODUCT INFORMATION

- **Property:** MMA resin-based two component road marking paint. Second component is liquid hardener.
- **Wet Paint Consumption Amount:** 1500 g/m²
- **Glass Bead Consumption Amount:** 400 g/m²

APPLICATION INFORMATION

- **Surface:** Asphalt and concrete.
- **Application Equipment:** Please consult with us.
- **Thinning:** It is used without thinning.
- **Cleaning:** Tinex (Cellulosic thinner)

APPLICATION CONDITIONS

- **Surface Temperature:** Between 5°C and 40°C (Do not apply during the day in summer and hot weather)
- **Dry Time:** 5-12 min.

PHYSICAL PROPERTIES

- **Viscosity (KU):** 95 ± 10 (23°C ± 2)
- **Density:** 1,65 g/ml ± 0,1

PACKAGE AND STORAGE CONDITIONS

- **Package:** 25 kg / can
- **Storage:** Products should be stored in their original packaging, in a dry, cool, well-ventilated place, away from sources of heat and sparks.
- **Shelf Life:** The date of expiry is one year from the production date



It has been formulated to meet the requirements of the **EN 1871**, **EN 1436** and Highways Technical

RAL 9016

RAL 5015

RAL 1023

RAL 6001

RAL 9017

RAL 2004

RAL 3020

RAL 7040

It can be produced according to the color codes selected from the RAL catalogue.



SINOJET ARGANCE®

THERMOPLASTIC SPRAY ROAD MARKING PAINT

"Sinojet Argance" thermoplastic spray road marking paint is widely used on divided roads, highways and urban main roads. It is a hot road marking paint applied by spraying to the road surface by means of suitable devices after melting at certain temperatures (180-210 °C). The short drying time provides the advantage of application without obstructing the traffic. Since it has no a volatile component, it does not cause any harm to the environment. If requested, it can be formulated in accordance with world standards such as BS 3262, AASHTO M249 and ASHGHAL.

PRODUCT INFORMATION

- **Property:** Rosin ester resin based hot-melt road marking paint applied by spraying
- **Paint Consumption Amount:** Depending upon thickness of paint film: 2 kg/m² for 1 mm, 3 kg/m² for 1,5 mm, 4 kg/m² for 2 mm.
- **Glass Bead Consumption Amount:** 400 g/m²

APPLICATION INFORMATION

- **Surface:** Asphalt
- **Application Equipment:** Heater, heating process, truck or application machine equipped with paint gun and glass bead gun. The primer application that will be made over the old thermoplastic paint will increase the performance of the new paint. It cannot be applied over two-component and one-component paint.

APPLICATION CONDITIONS

- **Surface Temperature:** Between 5°C and 40°C
- **Maximum humidity:** 80 %
- **Dry Time:** 2-4 min. (air temperature 10°C, humidity 69 %, 6 km/h wind)

PHYSICAL PROPERTIES

- **Softening Point:** Sp 3/°C > 95
- **Density:** 2,00 g/ml ± 0,1

PACKAGE AND STORAGE CONDITIONS

- **Package:** 20 kg / PE bag (powder) - 10 kg / block
- **Storage:** Products should be stored in their original packaging, in a dry, cool, well-ventilated place, away from sources of heat and sparks.
- **Shelf Life:** The date of expiry is two year from the production date



It has been formulated to meet the requirements of the **EN 1871**, **EN 1436** and Highways Technical

RAL 9016

RAL 9017

RAL 3020

RAL 1023

Please consult for other colors.



SINOJET SEVRE®

THERMOPLASTIC FLAT ROAD MARKING PAINT

Although "Sinojet Sevre" thermoplastic flat road marking paint is generally used in crosswalk applications in Turkey, this paint is used on road marking applications by our neighboring countries. It is a hot-melt road marking paint, which is applied by laying on the surface of the road through appropriate machines after melting in certain temperatures (150 - 180°C). It's short drying time gives the advantage of application without impeding traffic. Since this paint have no any volatile compounds, it is environment-friendly paint. Dry time is approximately 4 minutes. If requested, it can be formulated in accordance with world standards such as BS 3262, AASHTO M249 and ASHGHAL.

PRODUCT INFORMATION

- **Property:** Rosin ester resin based hot-melt road marking paint applied by laying
- **Paint Consumption Amount:** Depending on thickness of paint film: 4 kg/m² for 2 mm, 6 kg/m² for 3 mm.
- **Glass Bead Consumption Amount:** 400 g/m²

APPLICATION INFORMATION

- **Surface:** Asphalt
- **Application Equipment:** Heater, heating process, application machine equipped with laying apparatus and glass bead gun. The primer application that will be made over the old thermoplastic paint will increase the performance of the new paint. It can not be applied over two component paint.

APPLICATION CONDITIONS

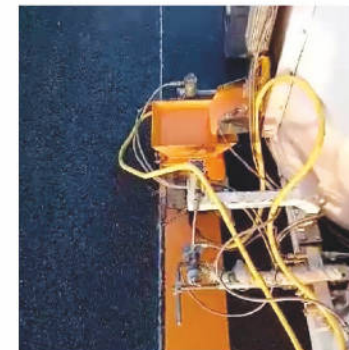
- **Surface Temperature:** Between 5°C and 40 °C
- **Maximum Humidity:** 80 %
- **Dry Time:** 4 min. (Air temperature 10°C, humidity 69 %, 6 km/h wind)

PHYSICAL PROPERTIES

- **Softening Point:** Sp 3/°C > 95
- **Density:** 2,00 g/ml ± 0,1

PACKAGE AND STORAGE CONDITIONS

- **Package:** 20 kg / PE bag (powder)- 10 kg / block
- **Storage:** Products should be stored in their original packaging, in a dry, cool, well-ventilated place, away from sources of heat and sparks.
- **Shelf Life:** The date of expiry is two year from the production date



It has been formulated to meet the requirements of the **EN 1871**, **EN 1436** and Highways Technical

RAL 9016

RAL 9017

RAL 3020

RAL 1023

Please consult for other colors.



SINOJET DOT LINE®



THERMOPLASTIC DOT LINE ROAD MARKING PAINT

Thermoplastic extruded road marking paint has recently been started to be used in shoulder line application in Turkey due to its cautionary properties and high wet visibility. It is a hot-melt road marking paint, which is applied by laying on the surface of the road through appropriate machines after melting in certain temperatures (150 - 180 °C). 4 mm upper layer is applied on 2 mm laying application. Dry time is approximately 7 minutes. If requested, it can be formulated in accordance with world standards such as BS 3262, AASHTO M249 and ASHGHAL.

PRODUCT INFORMATION

- **Property:** Rosin ester resin-based, hot-melt road marking paint applied by laying.
- **Paint Consumption Amount:** Depending on thickness of paint film: over 2 mm for 4 mm application is 8 kg/m²
- **Glass Bead Consumption Amount:** 400 g/m²

APPLICATION INFORMATION

- **Surface:** Asphalt
- **Application Equipment:** Heater, heating process, application machine equipped with laying apparatus and glass bead gun. The primer application that will be made over the old thermoplastic paint will increase the performance of the new paint. It can not be applied over two component paint.

APPLICATION CONDITIONS

- **Surface Temperature:** Between 5°C and 40°C
- **Maximum Humidity:** 80 %
- **Dry Time:** 5-7 minute. (Air temperature 21°C, humidity 62 %)

PHYSICAL PROPERTIES

- **Softening Point:** Sp 3/°C > 95
- **Density:** 2,00 g/ml ± 0,1

PACKAGE AND STORAGE CONDITIONS

- **Package:** 20 kg / PE bag (powder)- 10 kg / block
- **Storage:** Products should be stored in their original packaging, in a dry, cool, well-ventilated place, away from sources of heat and sparks.
- **Shelf Life:** The date of expiry is two year from the production date



It has been formulated to meet the requirements of the **EN 1871**, **EN 1436** and Highways Technical

RAL 9016

RAL 9017

RAL 3020

RAL 1023

Please consult for other colors.



HYDRAL®



WATER-BASED ROAD MARKING PAINT

"Hydral" water-based road marking paint can be used in all urban roads and expressways but it is most commonly used in airports and special projects. This one component water based road marking paint is applied by spraying on the surface and reflects light thanks to glass beads being dropped on the paint. Since it is water-based, it does not have any hazardous effects on environment and humans. The drying occurs by evaporation of the water in the paint.

PRODUCT INFORMATION

- **Property:** Water based road marking paint
- **Paint Consumption Amount:** 500-800 g/m²
- **Glass Bead Consumption Amount:** 350 g/m²

APPLICATION INFORMATION

- **Surface:** Asphalt and concrete (The application floor surface must be prepared 1 month before)
- **Application Equipment:** Please consult us.

APPLICATION CONDITIONS

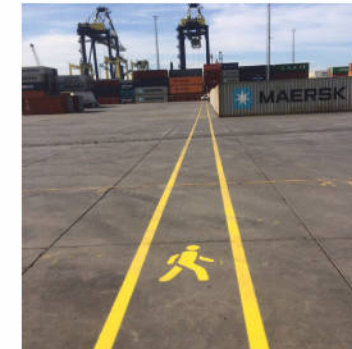
- **Surface Temperature:** Between 10°C and 40°C
- **Maximum humidity:** 80 %
- **Dry Time:** 15 min. (air temperature 19°C, surface temperature 19°C, humidity 37 %, 5 km / h wind)

PHYSICAL PROPERTIES

- **Viscosity (KU):** 90 ± 10 (23°C ± 2)
- **Density:** 1,60 g/ml ± 0,1
- **Solid Matter Percentag:** % 75 ± 2

PACKAGE AND STORAGE CONDITIONS

- **Package:** 25 kg / can. It is sold exclusively in 1500 kg IBCs
- **Storage:** Products should be stored in their original packaging, in a dry, cool, well-ventilated place, away from sources of heat and sparks.
- **Shelf Life:** The date of expiry is one year from the production date



It has been formulated to meet the requirements of the **EN 1871**, **EN 1436** and Highways Technical

RAL 9016

RAL 5015

RAL 1023

RAL 6001

RAL 9017

RAL 2004

RAL 3020

RAL 7040

It can be produced according to the color codes selected from the RAL catalogue.



It has been formulated to meet the requirements of the **EN 1871**, **EN 1436** and Highways Technical

AIRPORT RUNWAY AND TAXIWAY PAINT®



MMA ACRYLIC RESIN BASED AIRPORT RUNWAY AND TAXIWAY LINE PAINT

It is a solvent-based acrylic runway line paint specially produced for airports. It is used in areas such as aircraft stand direction lines, aircraft stand taxi lane, apron taxiway, runway lines. Our paint, which is used in markings of great importance for ensuring runway safety, can be applied at all airports. Thanks to the complementary product glass beads sprinkled on it, the power to reflect light and traffic safety increase.

PRODUCT INFORMATION

- **Property:** Solvent based acrylic runway line paint.
- **Wet Paint Consumption Amount:** 500-900 g/m²
- **Glass Bead Consumption Amount:** 350 g/m²

APPLICATION INFORMATION

- **Surface:** Runway
- **Application Equipment:** Please consult us.

APPLICATION CONDITIONS

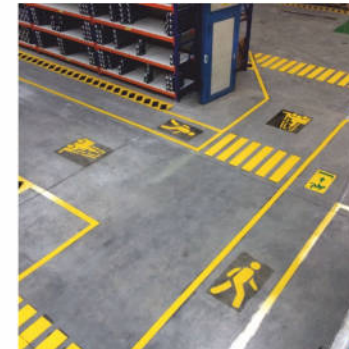
- **Floor Temperature:** It should be between 5°C-40°C.
- **Maximum Humidity:** 80 %
- **Drying Time:** 20 minutes (23°C and 49% humidity, 10 km/h wind)

PHYSICAL PROPERTIES

- **Viscosity (KU):** 90 ± 10 (23°C ± 2)
- **Density:** 1,60 g/ml ± 0,1
- **Solid Matter Percentage:** % 75 ± 3

PACKAGE AND STORAGE CONDITIONS

- **Package:** 30 kg / can
- **Storage:** Products should be stored in their original packaging, in a dry, cool, well-ventilated place, away from sources of heat and sparks.
- **Shelf Life:** 1 year from the production date.



It has been formulated to meet the requirements of the **EN 1871**, **EN 1436** and Highways Technical

OHS LINE PAINT



MMA ACRYLIC RESIN BASED WORK SAFETY PAINT

"ISG"(work safety paint) cold road marking paint is a one-component, acrylic MMA resin-based, solvent-based marking paint. It is produced for marking dangerous, cautious, or safe areas with road lines inside, around, and in other work areas, drawing the in-factory road routes of vehicles that perform certain duties, and drawing safe walking areas.

PRODUCT INFORMATION

- **Property:** It is an one component, acrylic MMA resin based, solvent based marking paint.
- **Wet Paint Consumption Amount:** 300-600 g / m²

APPLICATION INFORMATION

- **Surface:** Before the application, it must be ensured that the application surface is dry, free of dust, oil and other dirt.
- **Application Equipment:** Airless or pneumatic machine, brush, roller.

APPLICATION CONDITIONS

- **Surface Temperature:** Between 5°C and 40°C
- **Maximum Humidity:** 80 %
- **Dry Time:** 20 min. (air temperature 23°C, humidity 49%, 10 km/h wind)

PHYSICAL PROPERTIES

- **Viscosity (KU):** 90 ± 10 (23°C ± 2)
- **Density:** 1,60 g/ml ± 0,1
- **Solid Matter Percentage:** %75 ± 3

PACKAGE AND STORAGE CONDITIONS

- **Package:** 5 kg / can, 10 kg / can, 20 kg / can
- **Storage:** Products should be stored in their original packaging, in a dry, cool, well-ventilated place, away from sources of heat and sparks.
- **Shelf Life:** The date of expiry is one year from the production date.

RAL 9016

RAL 5015

RAL 1023

RAL 6001

RAL 9017

RAL 2004

RAL 3020

RAL 7040

It can be produced according to the color codes selected from the RAL catalogue.

RAL 9016

RAL 9017

RAL 3020

RAL 1023

It can be produced according to the color codes selected from the RAL catalogue.



SAFETYLINE

WORK SAFETY SPRAY LINE PAINT

"Safety Line" brand work safety line paint is a solvent-based paint with acrylic resin that can be sprayed. It Provides high visibility and permanence to occupational safety warning lines, walkways, areas where it is needed to determine work areas, provides high quality solutions to make work areas safer.

This paint is the first in Turkey and can be applied vertical to the ground. It can be applied with ALT ST, ALT ST-1, ALT ST-2 and by hand. Thanks to this feature, it provides practicality to the product when it is used.

PRODUCT INFORMATION

- **Property:** Acrylic resin based solvent spray line paint.
- **Paint Consumption Paint:** Average one layer 4-5 m²/tin. (It varies according to the applicator and the surface.)

APPLICATION INFORMATION

- **Surface:** Asphalt and concrete
- **Application Equipment:** ALT ST, ALT ST-1, ALT ST-2, by hand.
- **Cleaning :** Tinex (Cellulosic thinner)

APPLICATION CONDITIONS

- **Surface Temperature:** Between 5°C-40°C
- **Maximum Humidity:** 80 %
- **Dry Time:** 15 min. (Air temperatura 23°C, ground temperatura 25°C)

PHYSICAL PROPERTIES

- **Viscosity:** 20 s (DN4, at 20 C°)
- **Density:** 1,50 ± 0,1 g/ml

PACKAGE AND STORAGE CONDITIONS

- **Package:** 500 ml, 750 ml
- **Storage:** Products should be stored in their original packaging, in a dry, cool, well-ventilated place, away from sources of heat and sparks.

- **Attention !** After use, keep the cover closed and out of reach of children. Please keep storage away from spark sources



RAL 9016

RAL 5015

RAL 1023

RAL 6001

RAL 9017

RAL 2004

RAL 3020

RAL 7040

It can be produced according to the color codes selected from the RAL catalogue.



SIGNATURE

SPRAY LINE PAINT

Our "Signature" brand road marking spray paint is acrylic-based, fast-drying, high hiding, and yellowing resistance, forming a hard and flexible film. This paint is the first in Turkey and can be applied perpendicular to the ground. It is used in determining walking paths in places such as factories, sites, gas stations, determining parking areas, and designing playgrounds in schools. It can be applied by ALT-ST, ALT-ST 1, ALT-ST 2, or manually. Thanks to this feature, it provides practicality to the product in terms of use. Drying occurs when the solvent in the paint evaporates.

PRODUCT INFORMATION

- **Property:** Acrylic resin component cold spray road marking paint.
- **Paint Consumption Paint:** Average one layer 4-5 m²/tin. (It varies according to the applicator and the surface.)

APPLICATION INFORMATION

- **Surface:** Asphalt and concrete
- **Application Equipment:** ALT-ST, ALT-ST 1, ALT-ST 2
- **Cleaning:** Tinex (Cellulosic thinner)

APPLICATION CONDITIONS

- **Floor Temperature:** It should be between 5°C-40°C.
- **Maximum Humidity:** 80%
- **Drying Time:** 15 min. (Air temperature 23°C, ground temperature 25°C, 49% humidity, 10km/h wind)

PHYSICAL PROPERTIES

- **Viscosity (DIN4):** 20 s (DN4, at 20 C°)
- **Density:** 1,10 ± 0,1 g/ml

PACKAGE AND STORAGE CONDITIONS

- **Packaging:** 500 ml, 750 ml
- **Storage:** Products should be stored in their original packaging, in a dry, cool, well-ventilated place, away from sources of heat and sparks.

- **Attention!** After use, keep the cover closed and out of reach of children.



RAL 9016

RAL 5015

RAL 1023

RAL 6001

RAL 9017

RAL 2004

RAL 3020

RAL 7040

It can be produced according to the color codes selected from the RAL catalogue.



SIGNAFLOOR®

MMA BASED FLOOR COATING PAINT

"Signafloor" two component floor coating paint is based on MMA resin. This paint adheres to the surface with the reaction of components which are mixed at a certain rate. Signafloor has high physical and chemical resistance, abrasion resistance and easy cleaning. It can be used as top coat in multi-layer system or as self leveling. Film thickness can be applied between 1-4 mm. Even under heavy traffic, it keeps its high durability for long time. The paint should be applied within maximum 7 minutes after mixing the components each other. Signafloor can be used for factories, plants, ware houses, parking areas, food plants, hospitals, chemistry and pharmaceutical industries and all industrial floors.



PRODUCT INFORMATION

- **Component A:** MMA based floor coating paint
- **Component B:** Hardener
- **Wet Paint Consumption Amount:** Depending on thickness of application; 1,8 kg/m² for 1mm

APPLICATION INFORMATION

- **Surface:** Asphalt and concrete
- **Application Equipment:** Scraping knife, brush, roll
- **Thinning:** It is used without thinning
- **Cleaning:** Tinex [Cellulosic thinner]

APPLICATION CONDITIONS

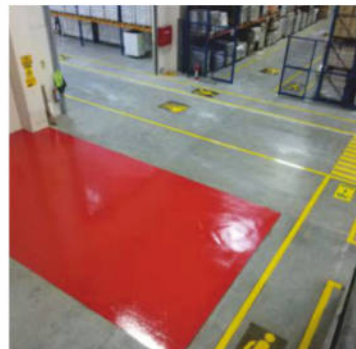
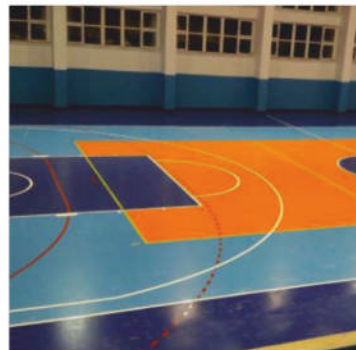
- **Surface Temperature:** Between 10°C and 40°C
- **Maximum Humidity:** %80
- **Dry Time:** 20 min. (23°C ve % 49 Humidity, 6 km/h wind)

PHYSICAL PROPERTIES

- **Viscosity (KU):** 110 ± 10 [23°C±1]
- **Density:** 1,80 g/ml ± 0,1
- **Solid Matter Percentage:** % 77 ± 2

PACKAGE AND STORAGE CONDITIONS

- **Package**
Component A: 25 Kg / can
Component B: 25 Kg / can
- **Storage:** Products should be stored in their original packaging, in a dry, cool, well-ventilated place, away from sources of heat and sparks.
- **Shelf Life:** The date of expiry is one year from the production date



It has been formulated to meet the requirements of the **EN 1871**, **EN 1436** and Highways Technical

RAL 9016

RAL 5015

RAL 1023

RAL 6001

RAL 9017

RAL 2004

RAL 3020

RAL 7040

It can be produced according to the color codes selected from the RAL catalogue.



Bike path



Tramway



Sidewalk



A

B



It has been formulated to meet the requirements of the **EN 1871**, **EN 1436** and Highways Technical

RAL 9016

RAL 3020

RAL 5015

RAL 1023

It can be produced according to the color codes selected from the RAL catalogue.



MF 25 SPRAY®

TWO COMPONENT, MMA ACRYLIC RESIN BASED, SPRAY BICYCLE, TRAM, WALKING PAINT.

MF 25 SPRAYING Our two-component acrylic MMA-based paint is used to define bicycle paths, tramways and walking paths. In order to ensure traffic safety in our cities, it is very important to color the bicycle paths, tramways and walking paths in accordance with the city plan. Our product, which is used for covering, coloring and adding lines and logos to these roads, is preferred due to its easy application. It has high UV resistance and chemical resistance.

PRODUCT INFORMATION

- **Property:** Two component Acrylic MMA based liquid-liquid bicycle road paint.
- **Wet Paint Consumption Amount:** 1000 g/m²

APPLICATION INFORMATION

- **Surface:** Asphalt and concrete. (The application floor surface should be prepared 1 month in advance.)
- **Application Equipment:** Please consult us.

APPLICATION CONDITIONS

- **Surface Temperature:** Must be below 10°C-40°C
- **Maximum Humidity:** 80 %
- **Dry Time:** 25 - 35 min (Air temperature: 19°C, ground temperature 19°C, %37 humidity, 5 km/h wind)

PHYSICAL PROPERTIES

- **Viscosity (KU):** 95 ± 10 [23°C ± 1]
- **Density:** 1,60 g/ml ± 0,1
- **Solid Matter Percentage:** % 75 ± 3 %

PACKAGE AND STORAGE CONDITIONS

- **Package:** 25 kg / can
- **Storage:** Products should be stored in their original packaging, in a dry, cool, well-ventilated place, away from sources of heat and sparks.
- **Shelf Life:** 1 year from the production date.



Bike path



Tramway



Sidewalk



It has been formulated to meet the requirements of the **EN 1871**, **EN 1436** and Highways Technical

MF 25 FLAT ®

TWO COMPONENT, MMA ACRYLIC RESIN BASED, BICYCLE, TRAM, WALKING PAINT.

MF 25 LAYING Our two-component acrylic MMA-based paint is used for determining bicycle paths, tramways and walking paths. In order to ensure traffic safety in our cities, it is very important to color the bicycle paths, tramways and walking paths in accordance with the city plan. Our product, which is used for covering, coloring and adding lines and logos to these roads, is preferred due to its easy application. It has high UV resistance and chemical resistance. Thanks to the quartz used, it creates a non-slip surface and creates a safe ground on jogging and cycling paths.



TDS, MSDS, Technical specifications.

PRODUCT INFORMATION

- **Property:** Two component Acrylic MMA based liquid-liquid bicycle road paint.
- **Wet Paint Consumption Amount:** 1500 - 2000 g/m²

APPLICATION INFORMATION

- **Surface:** Asphalt and concrete. (The application floor surface should be prepared 1 month in advance.)
- **Application Equipment:** Please consult us.

APPLICATION CONDITIONS

- **Surface Temperature:** Must be below 10°C-40°C
- **Maximum Humidity:** % 80
- **Dry Time:** 25 - 35 min (Air temperature: 19 °C, ground temperature 19°C 37% humidity, 5 km/h wind)

PHYSICAL PROPERTIES

- **Viscosity (KU):** 115 ± 10 (23°C ± 1)
- **Density:** 1,70 g/ml ± 0,1
- **Solid Matter Percentage:** % 79 ± 3

PACKAGE AND STORAGE CONDITIONS

- **Package:** 25 kg / can
- **Storage:** Products should be stored in their original packaging, in a dry, cool, well-ventilated place, away from sources of heat and sparks.
- **Shelf Life:** 1 year from the production date.



10 kg



3 kg



GRASSLINE



TDS, MSDS, Technical specifications.

GRASS FIELD PAINT

Our "Grassline" brand grass field paint is a natural resin-based water-based paint. This paint is a new generation of paint used for scratching all kinds of grass-covered areas and for dyeing the yellowing grass back to green. It is used extensively, especially in football and golf fields. Since the lime and plastic paints currently used damage the grass, the need for non-damaging paint has arisen. The physical properties of the paint do not prevent the grass from photosynthesizing. It has been proven that Grassline does not harm the plant tissue and has been certified by Ege University.

Note: Green color can be applied by diluting with water in a ratio of 6:1 to 3:1 depending on the desired grass color.

PRODUCT INFORMATION

- **Property:** Water based grass field paint.
- **Wet Paint Consumption Amount:** 300-400 g/m²

APPLICATION INFORMATION

- **Surface:** Before grassline application, it should be ensured that the application surface is dry, dust-free, free from oil and other dirt. The application should be avoided in rainy and windy weathers. It should not be applied on wet grass.
- **Application Equipment:** It is recommended to apply by spraying on the grass surface with automatic application equipment.

APPLICATION CONDITIONS

- **Drying Time:** 30 minutes (25°C Air temperature, 50% humidity)

PHYSICAL PROPERTIES

- **Viscosity (KU):** 50 ± 10 (23°C ± 1)
- **Density:** 1,10 g/ml ± 0,1
- **Solid Matter Percentage:** % 53 ± 3

PACKAGE AND STORAGE CONDITIONS

- **Package:** 3 kg / can, 10 kg / can
- **Storage:** Products should be stored in their original packaging, in a dry, cool, well-ventilated place, away from sources of heat and sparks.
- **Shelf Life:** 1 year from the production date.

RAL 9016

RAL 3020

RAL 5015

RAL 1023

It can be produced according to the color codes selected from the RAL catalogue.

RAL 9016

RAL 6001

It can be produced according to the color codes selected from the RAL catalogue.



COURTLINE

COURT PAINT

One component, acrylic resin-based, water-based and solvent-based tennis court paint. It is a new generation paint used for coating tennis courts and drawing or dyeing their lines. Thanks to its special structure, it has very good adhesion, spreading, covering and excellent covering properties. It is resistant to the corrosive effects of the atmosphere. Does not fade.



TDS, MSDS, Technical specifications.

PRODUCT INFORMATION

- **Property:** Acrylic resin based court paint
- **Wet Paint Consumption Amount:** 500-800 g/m²

APPLICATION INFORMATION

- **Surface:** Tennis court
- **Application Equipment:** Stainless steel tank, airless or pneumatic machine, brush, roller.

APPLICATION CONDITIONS

- **Floor Temperature:** It should be between 10°C-40°C.
- **Maximum Humidity:** 80 %
- **Drying Time:** 15 minutes (Air temperature: 19°C, ground temperature 19°C 37% humidity, 5 km / h wind)

PHYSICAL PROPERTIES

- **Viscosity (KU):** 90 ± 10 (23°C±1)
- **Density:** 1,60 g/ml ± 0,1
- **Solid Matter Percentage:** % 75 ± 3

PACKAGE AND STORAGE CONDITIONS

- **Package:** 25 kg / can
- **Storage:** Products should be stored in their original packaging, in a dry, cool, well-ventilated place, away from sources of heat and sparks.
- **Shelf Life:** 1 year from the production date.



RAL 9016

RAL 5015

RAL 6001

RAL 3009

RAL kataloğundan seçilen renk kodlarına göre istenilen renklerde üretilmektedir. | It can be produced according to the color codes selected from the RAL catalogue.



PRIMER

ACRYLIC BASED PRIMER

It is a one-component, solvent-based, acrylic-based transparent primer with excellent adhesion. Thanks to its high strength, it maintains its adhesion power and film thickness for a long time under heavy traffic. Its UV resistance and chemical resistance is very high. Thanks to its high adhesion, it is applied on smooth floors, as a primer between the floor and the paint, and on the paint where protection and shine is desired. Since it dries quickly and hardens, the application area is opened to traffic within 15 minutes.



TDS, MSDS, Technical specifications.

PRODUCT INFORMATION

- **Property:** It is a one component transparent acrylic primer paint.

APPLICATION INFORMATION

- **Surface:** Asphalt and concrete
- **Application Equipment:** It is recommended to apply by spraying on the road surface with automatic application equipment. If required, it can be applied with a brush or a roller.

APPLICATION CONDITIONS

- **Uygulama:** Before the application, it must be ensured that the application surface is dry, free of dust, oil and other dirt. It should not be applied on wet ground.
- **Ground Temperature:** The surface temperature of the road must be above 15 ° C.
- **Maximum Humidity:** 80 %
- **Drying Time:** 15 min. (17°C and % 49 Humidity)

PHYSICAL PROPERTIES

- **Color:** Transparent
- **Viscosity (KU):** 45
- **Density:** 0,9 ± 0,1 g/ml
- **Solid Matter Percentage:** %20 ± 2

PACKAGE AND STORAGE CONDITIONS

- **Package:** 15 kg / can
- **Storage:** Products should be stored in their original packaging, in a dry, cool, well-ventilated place, away from sources of heat and sparks.
- **Shelf Life:** The date of expiry is one year from the production date



TINSOL®

THINNING THINNER

"Tinsol" is a cold road line paint thinner. When the package of Signatekma brand paints is opened, they are produced and packaged ready to use without adding anything inside. However, due to the fact that there are paints in the market that cannot be used without thinning, it is produced to serve our municipalities in full. Tinsol, which is also the raw material of the paint, should only be used for thinning. If used as a cleaning thinner, it will not give an effective result. Tinsol brand Thinning Thinner of our company is TSE certified in accordance with TS 9720 standards.



TDS, MSDS, Technical specifications.

PRODUCT INFORMATION

- **Property:** Thinning thinner

PACKAGE AND STORAGE CONDITIONS

- **Package:** Our packages are sold as 15 kg.
- **Storage:** Store in dry and well-ventilated closed areas, keep away from fire.
- **Shelf Life:** 1 year from the production date.



TINEX®

CLEANING THINNER

"Tinex" is a cleaning thinner for cold road marking paint. Cleaning the machines after application is very important in terms of their longevity. At this point, we offer Tinex brand cleaning thinner to the service of our customers in order to meet the need for cellulosic thinner, which has a very strong solvent feature. If it is used for thinning, it may cause negative results such as flowing of paint, so it will be healthier and more effective to use only for cleaning. Our packages are sold as 15 kg. Our company's Tinex brand Cleaning Thinner is TSE certified in accordance with TS 9720 standards.



TDS, MSDS, Technical specifications.

PRODUCT INFORMATION

- **Property:** Cleaning thinner

PACKAGE AND STORAGE CONDITIONS

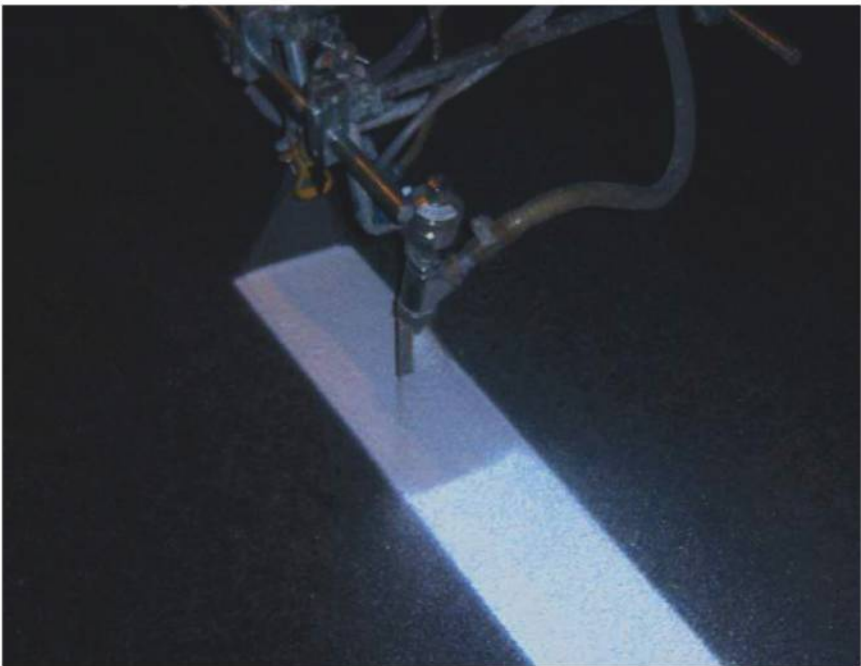
- **Package:** 15 kg / can
- **Storage:** Products should be stored in their original packaging, in a dry, cool, well-ventilated place, away from sources of heat and sparks.
- **Shelf Life:** 1 year from the production date.

CAMTEKMA® | GLASS BEADS®

• GENERAL FEATURES

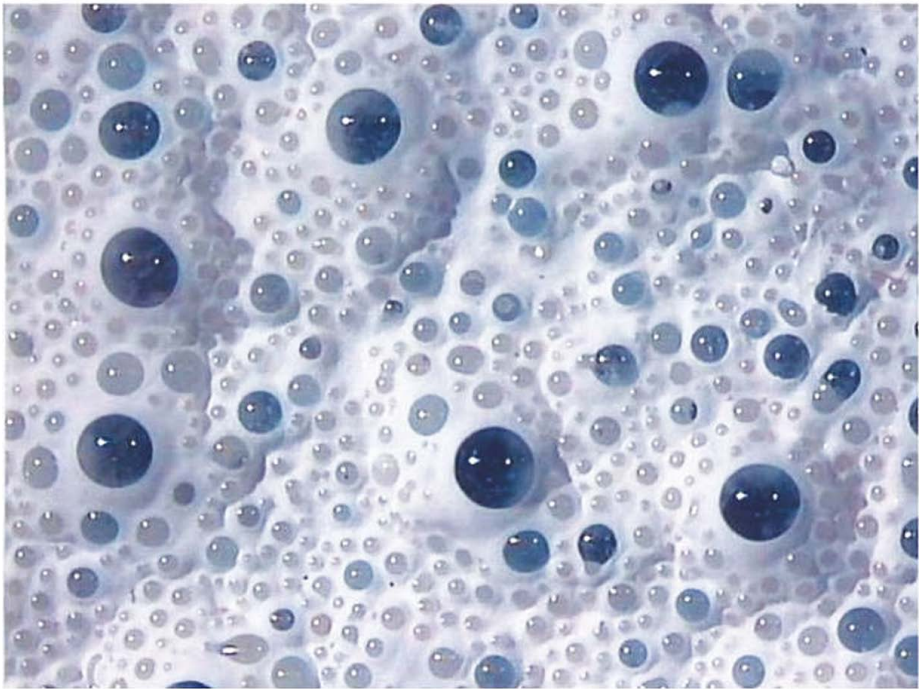
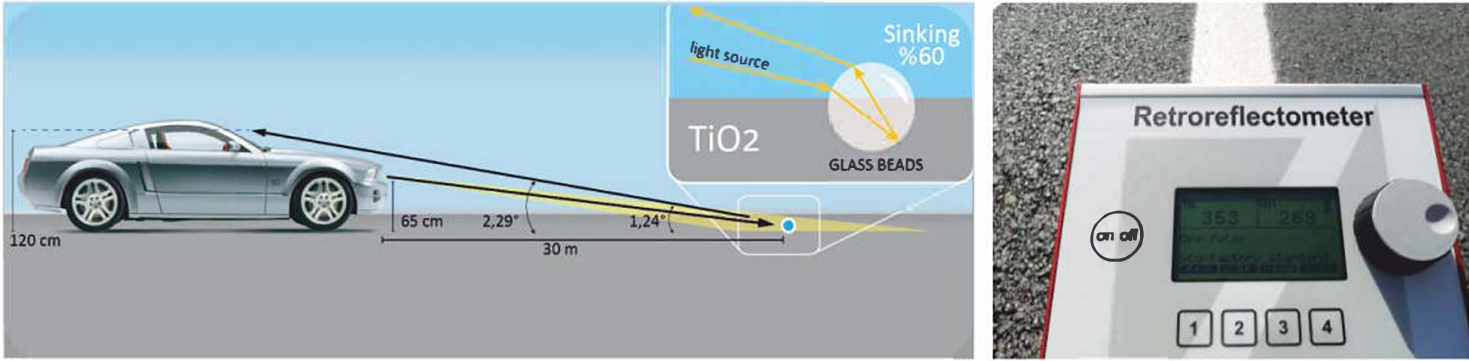
Glass bead is a complementary product of the paint. The glass beads being added into the paint during production process and also the glass beads which are splattered on the paint before the paint gets dry, have direct effect on night vision. The coating on the glass beads may differ depending on the paint type. Roundness rate of the glass bead will increase the reflection of the headlamps of the vehicle.

CAMTEKMA | GLASS BEADS



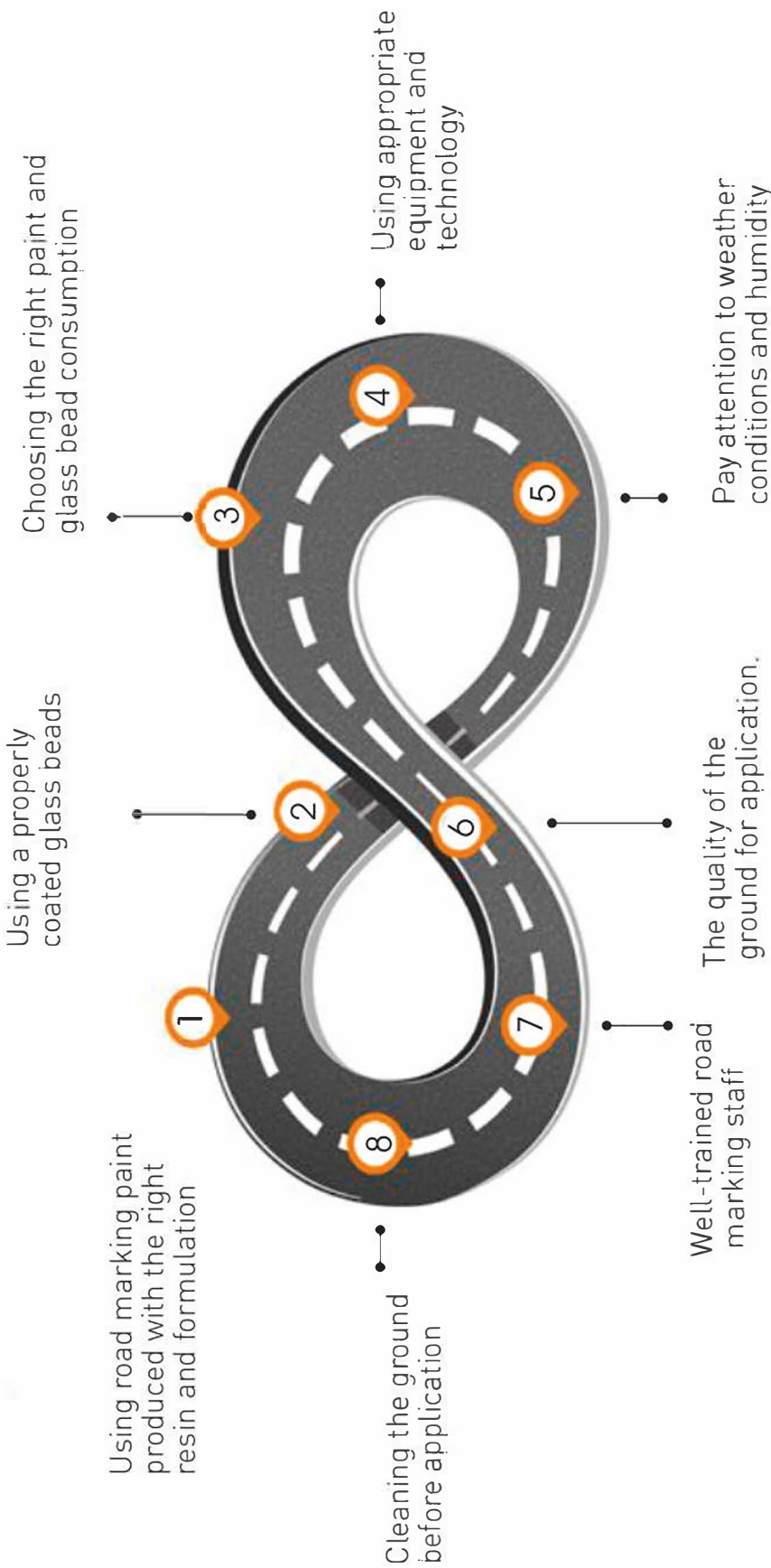
TECHNICAL SPECIFICATIONS

TYPE	MICRON INTERVAL	BAG WEIGHT	ROUNDNESS RATE
PREMIX	180 – 850 µ	25 kg	≥ % 70
STANDART SILICONE COATED	180 – 850 µ	25 kg	≥ % 80
HIGH PERFORMANCE SILICONE COATED	180 – 1180 µ	25 kg	≥ % 80
STANDART SILANE COATED	180 – 850 µ	25 kg	≥ % 80
HIGH PERFORMANCE SILANE COATED	355 - 850 µ	25 kg	≥ % 80
HARDENER COATED	180 – 850 µ	20 kg	≥ % 80



It is important that the glass bead is embedded 50-60% in the paint film.

NECESSARY ELEMENTS FOR SUCCESS IN APPLICATION



POINTS TO TAKE INTO ACCOUNT BEFORE APPLICATION

- The paints, materials and equipments to be used must be present completely at the site.
- The surface must be dry, clean and cleaned from all kinds of grease and dirt. The application should not be performed on humid surfaces and when the relative humidity is over 80%.
- The hardener and thinner must be used as exactly as specified in the technical sheet of the paint.
- If there are any remaining, cracked or blistered paint with sticking weakness on the surface, it must be cleaned.
- The dust and residues remaining after the old paint is removed from the surface must be cleaned. The asphalt and newly coated concrete surfaces, which will be painted for the first time, must be painted after 3-4 weeks.
- A thin layer of paint must be applied on the new asphalt surface; 1 week later, the primary layer must be applied. Thus, the grease and chemicals from the asphalt will be absorbed by the first layer and prevent blanching of the primary color.
- The paint consumption amount per area must be the same with recommended amount by the producer. Wet and dry thick layers must be measured and consumption must be kept under control

POTENTIAL POST-APPLICATION PROBLEMS AND THE REASONS

Sticking Problem

- Reasons:**
- Thick application of the paint
 - Insufficient pre-evaporation time intervals between the layers
 - Application in hot and windy weather conditions
 - Using quick type hardener and thinner
 - Rapid evaporation of the solvent

Blistering Problem

- Reasons:**
- Thick application of the paint
 - Insufficient pre-evaporation time intervals between the layers
 - Using incorrect and low-quality thinner
 - Application in hot and windy weather conditions

Crumpling and Removal Problem

- Reasons:**
- Thick application of the paint
 - Application in inappropriate weather conditions (Very hot or chilly, humid, windy)
 - Rapid drying of the surface, when the lower layers are still wet
 - Application of 2 different systems together
 - Application before removing old paint from surface
 - Poor surface cleaning
 - Humid surface

Dusting Problem

- Reasons:**
- Use of improper thinner
 - Holding the gun remotely from the surface
 - High or low paint viscosity
 - Using mismatched gun sets, using high-capacity cap and a small nozzle
 - High air pressure

Cracking Problem

- Reasons:**
- Application of hard coating or paint on a flexible surface
 - Poor surface cleaning
 - Using improper hardener or thinner
 - Applying the second layer before the first layer dries

Yield and Sagging Problem

- Reasons:**
- High or low paint viscosity
 - Use of improper thinner (Low quality, slowly, evaporating, incoherent thinner)
 - Excessive wet thick layer
 - Holding the gun closely to the surface
 - Irregular spraying
 - Slow movement of the gun

USEFUL INFORMATION

	Applications Daily Footage				
	Manuel	Machine	Self Propelled	Truck	Line Width
Signawall	± 100 m²	± 300 m²			10 - 30
Signaline	± 100 m²	± 300 m²	± 1000 m²	± 5000 m²	10 - 30
Constance	± 100 m²	± 300 m²	± 1000 m²	± 5000 m²	10 - 30
MF 21	± 200 m²	± 200 m²			10 - 50
MF 21 Serpme		± 200 m²			10 - 50
MF 21 Profil		± 200 m²			15
MF 5			± 1000 m²	± 2000 m²	10 - 30
MF 35			± 1000 m²	± 2000 m²	10 - 30
MF 98:2			± 1000 m²	± 2000 m²	10 - 30
Pluvio Atlantis		± 500 m²	± 1000 m²	± 2000 m²	10 - 30
Argance			± 1000 m²	± 2000 m²	10 - 20
Sevre	± 200 m²		± 1000 m²	± 2000 m²	10 - 50
Extrude		± 400 m²	± 1000 m²	± 2000 m²	10 - 50
Hydral	± 100 m²	± 300 m²	± 1500 m²	± 3000 m²	10 - 30

	Glass Beads - Visibility			Boya	
	Type	Consumption	Thick Layer	Consumption	Applied
Signawall	-	-	350 µ	500 gr / m²	± 2 yıl - years
Signaline	Silicone	350 gr / m²	500 µ	800 gr / m²	± 9 ay - months
Constance	Silicone	350 gr / m²	500 µ	800 gr / m²	± 1 yıl - year
MF 21	Silane	500 gr / m²	2 - 5 mm	4 kg / m² for 2 mm, 6 kg / m² for 3 mm	± 2 yıl - years
MF 21 Serpme	Silane	500 gr / m²	% 80 full	3 - 7 kg / m²	± 2 yıl - years
MF 21 Profil	Silane	500 gr/m²	7 mm	10 - 14 kg / m²	± 2 yıl - years
MF 5	Silane	500 gr/m²	700 µ	1000 gr (A) + 1000 gr (B) / m²	± 2 yıl - years
MF 35	Silane	500 gr/m²	700 µ	1000 gr (A) + 1000 gr (B) / m²	± 2 yıl - years
MF 98:2	Silane	400 gr/m²	700 µ	1500 gr/m²	± 2 yıl - years
Pluvio Atlantis	Hardener	-	700 µ	(A)1000 gr / m²+ (B) 1000 gr / m²	± 2 yıl - years
Argance	Silicone	400 gr/m²	1 - 2 mm	1,5 mm için; 3 kg / m² 2mm için; 4 kg / m²	± 2 yıl - years
Sevre	Silicone	400 gr/m²	2 - 3 mm	2 mm için; 4 kg / m² 3 mm için; 6 kg / m²	± 2 yıl - years
Extrude	Silicone	400 gr / m²	2 mm + 4 mm	2 mm üzerine 4 mm uygulama için 8 kg / m²	± 2 yıl - years
Hydral	Silane	350 gr / m²	500 µ	700 gr / m²	± 1 yıl - year



ALTEKMA SPORTS CLUB

Altekma Sports Club (Altekma SK) was established in 1999 to carry the success of high school in volleyball from school level to club level. The journey, which started from the regional leagues, moved to the Efeler League, the top league of Turkish Volleyball this year, with stable struggles in 3 leagues, 2 leagues and 1st league.

Our club, which started to struggle under the support of the Altekma Group Companies in 2008, both provided the financial support it needed and made great strides in sustainability, which is difficult to reach in the sports world. In 2014, the club management was rejuvenated and met with new names with the vision of Melih Sebastien Durmuş, Vice Chairman of the Board of Directors of Altekma Group Companies and a former high school graduate.

Backed by the great support of the Altekma Group companies, the club was steadily prepared for the upper league after 2014 and went down in the history of the club by playing the Play-Offs for the last 4 seasons. In 2020, all the work paid off and we were entitled to participate in the Efeler League, the top league of volleyball sports.

In 2021, one of the firsts of the club's history took place and our club took part in the Efeler League for the first time.

We showed an incredible performance in our first year and finished the regular season in 8th place and got the right to play in the Play-Offs. At the end of the Play-Offs, we defeated İnegöl Belediyespor in both matches and completed the season on the 7th position. We brought a new breath and excitement not only to İzmir Volleyball but also to Turkish Volleyball.

Operating in all youth setup categories with 180 licensed athletes, Altekma SK continues on its way with the belief in both the development of young people and equal opportunities, in the light of the words of Great Leader Mustafa Kemal Atatürk "I like sportsmen who are smart, agile and also well-behaved."

Our Mission

Contributing to the development of Turkish sports is to raise exemplary athletes who perceive doing sports as a necessity of contemporary life, who are happy, self-confident, mentally, healthy disciplined, and also possess fighting power. Our club, acting with this mission, aims to discover young talents in Turkey and İzmir, to bring them into the infrastructure, to train top-level players for the Turkish National Teams, and to revive the love of sports that has begun to disappear.

Our Vision

To reach the championships by achieving success in Turkish Leagues and in Europe with the contribution of the infrastructure athletes of the Altekma SK, to strive for excellence, leadership, quality, and innovation. Contributing to the success of Turkish National Teams.



PAINT SPRAYING AND ROAD MARKING MACHINES

Altekma A.Ş. was established in İzmir in 1997 in order to provide solutions to the sector related to surface preparation and surface coating methods. In order to serve you better and to be your "Solution Partner"; Our Marmara Regional Directorate in Istanbul Pendik, our Central Anatolia Regional Directorate in Ankara Ostim and our Aegean Regional Directorate in İzmir Food Bazaar continue their work. In addition, Altekma A.Ş. has established the strongest dealership network in Turkey in the sector in order to be your local partner and increase the service quality.

Maintaining its leadership in the sector with its understanding of quality products, customer satisfaction and after-sales service, Altekma A.Ş. has indexed its target to sustainable growth and development by raising the bar of success every year. Expanding its machinery portfolio and facilities, Altekma manufactures sandblasting boilers, texturing machines, water jets, road marking trucks and various spare parts. At the same time, it exports these products to Europe, the Middle East, North Africa and Turkic Republics and is getting stronger day by day in the region.

As Altekma Group, we continue to take firm steps forward and maintain our leadership in the sector with our first day's excitement, awareness and innovative perspective, on this path we started with the slogan "Our Line is Accuracy, Our Principle is Quality".





OUR HORIZONTAL MARKING COMPANY

Boytekma Anonim Şirketi started its activities in 1997 with an expert staff in the sector. It continues on its way with the vision of "Our line is righteousness, our principle is quality".

It makes horizontal and vertical markings in accordance with Turkish Highway Directorate(KGM) standards. In addition to the traffic engineering services it provides by implementing the projects of KGM and Municipalities, it successfully carries out horizontal and vertical marking works of projects such as shopping malls' car parks, airports, race tracks and factories. Our company, which attaches importance to R&D studies, has developed and continues to develop its road marking truck and machinery track. Boytekma Inc. It has ISO 9001 Quality Management System, ISO 14001 Environmental Management System, ISO 45001 Occupational Health and Safety Management system certificates.

As a working principle, Boytekma works meticulously to increase the application quality by paying attention to asphalt temperature, road surface cleanliness, relative humidity, ambient temperature and solvents that may affect the paint on the road surface, so that positive results can be obtained in the application areas.

Boytekma manufactures road marking trucks and road marking machines developed with today's technology by the experienced staff of Altekma Anonim Şirketi, one of the group companies, from which it supplies the equipment it uses, with more than 20 years of experience and knowledge. Boytekma is one of the group companies that use paints of Signatekma Anonim Şirketi, from which it supplies the road marking paints it uses, is the first and only company in Turkey to produce 16 types of road marking paints in road marking paint production.

In addition to successful applications, Boytekma maintains its place among the leading companies of the sector with its reliable, fast and quality services that can meet every need of the sector.

Our services;

- *Traffic engineering, traffic project construction and applications,
- *Thermoplastic paint spray, laying and dot line applications,
- *Multi-component paint laying, spray and profile skipping applications,
- *One-component road marking paint applications,
- *Road button, rubber bump and delineator applications,
- *Traffic sign production and installation



OUR VERTICAL MARKING COMPANY

Founded within the Altekma Group, Yoltekma A.Ş. It provides quality service in accordance with the standards in the field of traffic vertical marking.

Yoltekma produces functional economic projects in accordance with national and international specifications in order to ensure safe and comfortable transportation of all vehicles and pedestrians in traffic circulation in transportation projects.

Yoltekma, on the other hand, carries out the assembly operations of the plates it produces in the field, in accordance with the occupational health and safety rules, thanks to its experienced teams.

As Altekma Group, we continue to take firm steps forward and maintain our leadership in the sector with our awareness and innovative perspective, which we have created thanks to the works we have done with the excitement of the first day, on this path we started with the slogan "There is someone who guides you on the road".





BOYAMAK Boya Mak. Ltd. Şti

After Altekma Group was established in 1997, expanded its fields of activity as of 2016 and found Boyamak company to meet the needs of line and plate in the private sector. Boyamak A.Ş., which is a solution partner for private sector traffic signs by using the products produced by the group companies, continues its works with its expert staff and quality service understanding, who are aware of the importance of following the developing technology and science closely.

Our services

- Designing of open and closed car parks and application in the field,
- Finding and applying the most appropriate solution for all traffic safety needs in facilities and sites,
- It directs the traffic flow correctly with lines and traffic signs.

Our Private Sector Applications;

- Car Park and Pedestrian Road Lines,
- Wall, Column, Curbs,
- Pedestrian Crossing and Disabled Parking Applications,
- Direction Arrows and All Template Applications,
- Occupational Safety Lines,
- Airport and Port Applications,
- Vehicle Leaning Pole (Stopper) and Road Button Assemblies,
- Rubber Decelerator, Delineator Assemblies,
- Traffic Safety Mirror and Column Corner Protector Assemblies,
- Ground Trap Assemblies,
- All Parking Lot Marking Assemblies,
- Bicycle Parking Rail Applications,



Altekma Dış Tic. Boya Mak. San. A.Ş.
Address | Bahçelievler Mah. Bağımsızlık Cad.
 No:27 Yazıbaşı Torbalı / İZMİR
Telephone | +90 232 853 85 78
Fax | +90 232 853 96 59
İnternet Sitesi | www.altekma.com.tr
E-mail | altekma@altekma.com.tr



Boyamak Boya Mak. Ltd. Şti.
Address | Bahçelievler Mah. Bağımsızlık Cad. No:23 Kat:1 Yazıbaşı-Torbalı/İzmir
Telephone | +90 232 853 88 96
Fax | +90 232 853 96 59
İnternet Sitesi | www.boyamak.com.tr
E-mail | info@boyamak.com.tr



Boytekma Trafik İşaretleri Tic. San. A.Ş.
Address | Bahçelievler Mah. Bağımsızlık Cad. No:23 Kat:1 Yazıbaşı Torbalı / İZMİR
Telephone | +90 232 853 88 97
Fax | +90 232 853 72 02
İnternet Sitesi | www.boytekma.com.tr
E-mail | boytekma@boytekma.com.tr



SIGNATEKMA

Signatekma Boya ve Sin. San. ve Tic. A.Ş.
Address | Bahçelievler Mah. Bağımsızlık Cad. No:23 Yazıbaşı - Torbalı / İZMİR
Telephone | +90 232 853 85 70
Fax | +90 232 853 73 79
İnternet Sitesi | www.signatekma.com.tr
E-mail | info@signatekma.com.tr



Yoltekma Trafik San. Ve Tic. A.Ş.
Address | Bahçelievler Mah. Bağımsızlık Cad. No:21 Yazıbaşı Torbalı / İZMİR
Telephone | +90 232 853 85 70
Fax | +90 232 853 73 79
İnternet Sitesi | www.yoltekma.com.tr
E-mail | yoltekma@yoltekma.com.tr



Ankara Bölge Müdürlüğü
Address | Ostim Org. San. Bölgesi 1274 Sk. No:1 Yenimahalle / ANKARA
Telephone | +90 312 394 22 73
Fax | +90 312 394 23 72
İnternet Sitesi | www.altekma.com.tr
E-mail | altekma@altekma.com.tr

İstanbul Bölge Müdürlüğü
Address | Bahçelievler Mah. Polen Sk. No:30 Pendik / İSTANBUL
Telephone | +90 216 446 94 10
Fax | +90 216 446 94 11
İnternet Sitesi | www.altekma.com.tr
E-mail | altekma@altekma.com.tr

İzmir Bölge Müdürlüğü
Address | Temsil Plaza İş Merkezi 1201/1 Sok. No:Z/42 35110 Yenışehir / İZMİR
Telephone | +90 232 469 71 74
Fax | +90 232 469 62 86
Website | www.altekma.com.tr
E-mail | altekma@altekma.com.tr



Scan the QR code to watch our introduction film